

For Research Use Only

TLN1 Recombinant antibody, PBS Only (Detector)

Catalog Number: 82856-15-PBS



Basic Information

Catalog Number:

82856-15-PBS

Size:

1 mg/ml

Source:

Rabbit

Isotype:

IgG

Immunogen Catalog Number:

AG5367

GenBank Accession Number:

BC042923

GeneID (NCBI):

7094

UNIPROT ID:

Q9Y490

Full Name:

talin 1

Calculated MW:

2541 aa, 270 kDa

Purification Method:

Protein A purification

CloneNo.:

240294F4

Applications

Tested Applications:

Cytometric bead array, Sandwich ELISA, Indirect ELISA, Sample test

Species Specificity:

human

Background Information

Storage

Storage:

Store at -80°C.

The product is shipped with ice packs. Upon receipt, store it immediately at -80°C

Storage Buffer:

PBS Only

For technical support and original validation data for this product please contact:

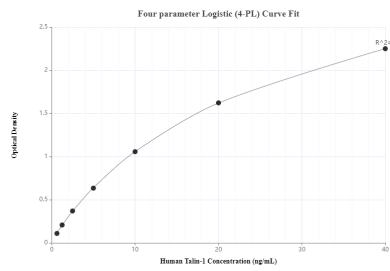
T: 4006900926

E: Proteintech-CN@ptglab.com

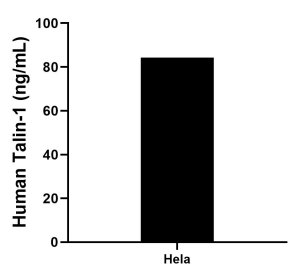
W: ptgcn.com

This product is exclusively available under Proteintech Group brand and is not available to purchase from any other manufacturer.

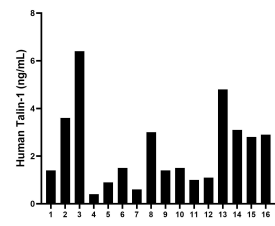
Selected Validation Data



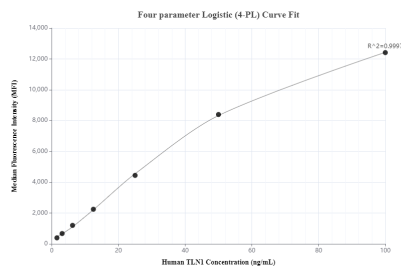
Sandwich ELISA standard curve of MP00405-4, human Talin-1 Recombinant Matched Antibody Pair - PBS only. 82856-19-PBS was coated to a plate as the capture antibody and incubated with serial dilutions of standard Ag5367. 82856-15-PBS was HRP conjugated as the detection antibody. Range: 0.625-40 ng/mL



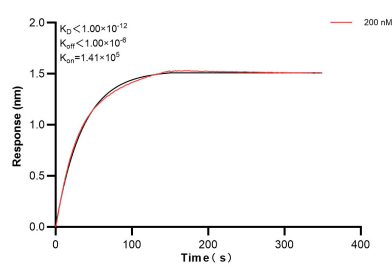
The mean Talin-1 concentration was determined to be 84.3 ng/mL in HeLa cell extract based on a 3.1 mg/mL extract load.



Serum of sixteen individual healthy human donors was measured. The Talin-1 concentration of detected samples was determined to be 2.3 ng/mL with a range of 0.4 - 6.4 ng/mL.



Cytometric bead array standard curve of MP00405-3, Talin-1 Recombinant Matched Antibody Pair, PBS Only. Capture antibody: 82856-16-PBS. Detection antibody: 82856-15-PBS. Standard: Ag5367. Range: 1.56-100 ng/mL



Biolayer interferometry (BLI) kinetic assay of 82856-15-PBS against Human TLN1 was performed. The affinity constant is below 1 pM.