

For Research Use Only

Mmp9 Recombinant antibody

Catalog Number: 82854-1-RR



Basic Information

Catalog Number:

82854-1-RR

Size:

1000 µg/ml

Source:

Rabbit

Isotype:

IgG

GenBank Accession Number:

NM_013599

GeneID (NCBI):

17395

UNIPROT ID:

P41245-1

Full Name:

matrix metalloproteinase 9

Calculated MW:

81kd

Observed MW:

100 kDa

Purification Method:

Protein A purification

CloneNo.:

5A1

Recommended Dilutions:

WB 1:5000-1:50000

Applications

Tested Applications:

WB, ELISA

Species Specificity:

mouse

Positive Controls:

WB : mouse spleen tissue, mouse lung tissue

Background Information

Mmp9 (matrix metalloproteinase 9), also known as Clg4b. It is expected to be located in extracellular matrix. Proteins of the matrix metalloproteinase (MMP) family are involved in the breakdown of extracellular matrix in normal physiological processes, such as embryonic development, reproduction, tissue remodeling, and disease processes, such as arthritis or metastasis. Most MMP's are secreted as inactive proproteins which are activated when cleaved by extracellular proteinases. Studies in rhesus monkeys suggest that MMP9 is involved in IL-8-induced mobilization hematopoietic progenitor cells from bone marrow, and murine studies suggest a role in tumor-associated tissue remodeling. The pro-MMP9 is 92 kDa, and it can be detected as a processed form of 68 kDa. This protein can exist as a dimer of 180 kDa (PMID:7492685).

Storage

Storage:

Store at -20°C. Stable for one year after shipment.

Storage Buffer:

PBS with 0.02% sodium azide and 50% glycerol pH 7.3.

Aliquoting is unnecessary for -20°C storage

For technical support and original validation data for this product please contact:

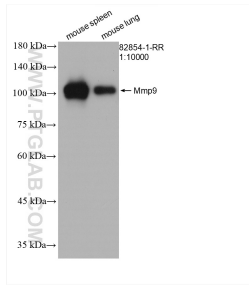
T: 4006900926

E: Proteintech-CN@ptglab.com

W: ptgcn.com

This product is exclusively available under Proteintech Group brand and is not available to purchase from any other manufacturer.

Selected Validation Data



Various lysates were subjected to SDS PAGE followed by western blot with 82854-1-RR (Mmp9 antibody) at dilution of 1:10000 incubated at room temperature for 1.5 hours.