

For Research Use Only

ARL13B Recombinant antibody

Catalog Number:82834-2-RR



Basic Information

Catalog Number: 82834-2-RR	GenBank Accession Number: BC094725	Purification Method: Protein A purification
Size: 1000 ug/ml	GeneID (NCBI): 200894	CloneNo.: 3H5
Source: Rabbit	UNIPROT ID: Q35XY8	Recommended Dilutions: IF/ICC 1:200-1:800
Isotype: IgG	Full Name: ADP-ribosylation factor-like 13B	
Immunogen Catalog Number: AG12015	Calculated MW: 48 kDa	

Applications

Tested Applications: IF/ICC, ELISA	Positive Controls: IF/ICC : Starvation treated hTERT-RPE1 cells, hTERT-RPE1 cells
Species Specificity: human	

Background Information

ARL13B, also named as ARL2L1, is a small ciliary G protein of the Ras superfamily. Localized in the cilia, it is required for cilium biogenesis and sonic hedgehog signaling. Defects in ARL13B are the cause of Joubert syndrome (JS) which is an autosomal recessive disorder characterized by a distinctive cerebellar malformation (PMID: 19906870). ARL13B can be used to mark the cilia (PMID:22072986). The second antibody is used against guinea pigs.

Storage

Storage:
Store at -20°C. Stable for one year after shipment.
Storage Buffer:
PBS with 0.02% sodium azide and 50% glycerol pH 7.3.
Aliquoting is unnecessary for -20°C storage

For technical support and original validation data for this product please contact:

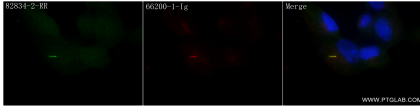
T: 4006900926

E: Proteintech-CN@ptglab.com

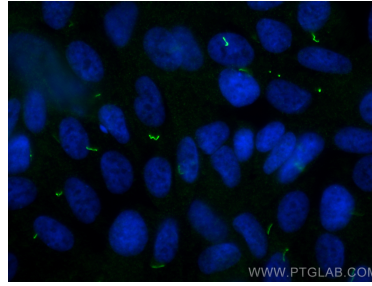
W: ptgcn.com

This product is exclusively available under Proteintech Group brand and is not available to purchase from any other manufacturer.

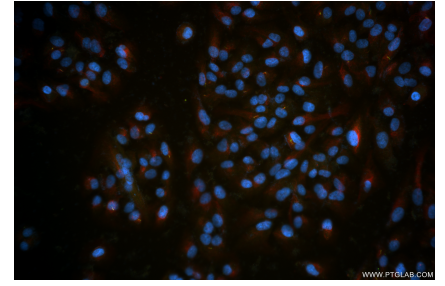
Selected Validation Data



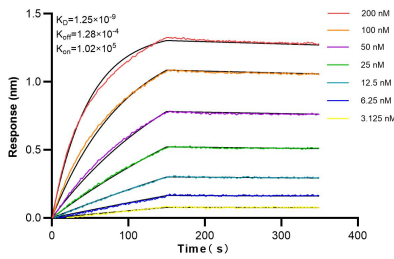
Immunofluorescent analysis of (4% PFA) fixed Starvation treated hTERT-RPE1 cells using ARL13B antibody (82834-2-RR, Clone: 3H5) at dilution of 1:400 and CoraLite®488-Conjugated AffiniPure Goat Anti-Rabbit IgG(H+L) (SA00013-2), Acetyl-Tubulin (Lys40) antibody (66200-1-Ig, Clone: 7E5H8, red).



Immunofluorescent analysis of (4% PFA) fixed hTERT-RPE1 cells using ARL13B antibody (82834-2-RR, Clone: 3H5) at dilution of 1:400 and CoraLite®488-Conjugated Goat Anti-Rabbit IgG(H+L) (SA00013-2).



Immunofluorescent analysis of (4% PFA) fixed Starvation treated hTERT-RPE1 cells using ARL13B antibody (82834-2-RR, Clone: 3H5) at dilution of 1:400 and CoraLite®488-Conjugated Goat Anti-Rabbit IgG(H+L) (SA00013-2), Acetyl-Tubulin (Lys40) antibody (66200-1-Ig, Clone: 7E5H8, red).



Bi-layer interferometry (BLI) kinetic assays of 82834-2-RR against Human ARL13B were performed. The affinity constant is 1.25 nM.