

For Research Use Only

CLOCK Recombinant antibody

Catalog Number: 82829-1-RR

Featured Product



Basic Information

Catalog Number:

82829-1-RR

Concentration:

800 ug/ml

Source:

Rabbit

Isotype:

IgG

Immunogen Catalog Number:

AG30011

GenBank Accession Number:

BC041878

GeneID (NCBI):

9575

UNIPROT ID:

O15516

Full Name:

clock homolog (mouse)

Calculated MW:

846 aa, 95 kDa

Observed MW:

110 kDa

Purification Method:

Protein A purification

CloneNo.:

1123

Recommended Dilutions:

WB 1:1000-1:8000

IHC 1:200-1:800

Applications

Tested Applications:

WB, IHC, ELISA

Species Specificity:

human, mouse, rat

Note-IHC: suggested antigen retrieval with TE buffer pH 9.0; (*) Alternatively, antigen retrieval may be performed with citrate buffer pH 6.0

Positive Controls:

WB : HeLa cells, mouse testis tissue, HEK-293 cells, A431 cells, PC-3 cells, NIH/3T3 cells, rat testis tissue

IHC : mouse liver tissue,

Background Information

Circadian locomotor output cycles protein kaput (CLOCK), also named as BHLHE8 or KIAA0334, is a 846 amino acid protein, which contains one bHLH domain, one PAC domain, and two PAS domains. CLOCK localizes in the nucleus and cytoplasm. CLOCK is expressed in all tissues examined including spleen, thymus, prostate, testis, ovary, small intestine, colon, leukocytes, heart, brain, placenta, lung, liver, skeletal muscle, kidney and pancreas. ARNTL/2-CLOCK heterodimers activate E-box element (5'-CACGTG-3') transcription of a number of proteins of the circadian clock, such as PER1 and PER2. The calculated molecular weight of CLOCK is 95kDa, we detected a 95-110 kDa protein by western blot. Our result is similar to the result of research paper (PMID: 30683868).

Storage

Storage:

Store at -20°C. Stable for one year after shipment.

Storage Buffer:

PBS with 0.02% sodium azide and 50% glycerol pH 7.3.

Aliquoting is unnecessary for -20°C storage

For technical support and original validation data for this product please contact:

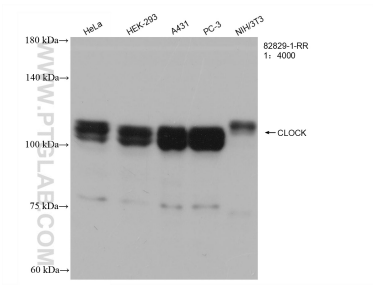
T: 4006900926

E: Proteintech-CN@ptglab.com

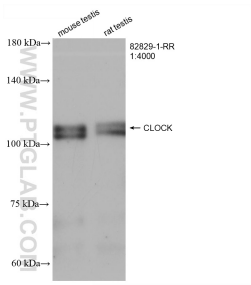
W: ptgcn.com

This product is exclusively available under Proteintech Group brand and is not available to purchase from any other manufacturer.

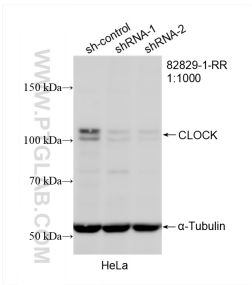
Selected Validation Data



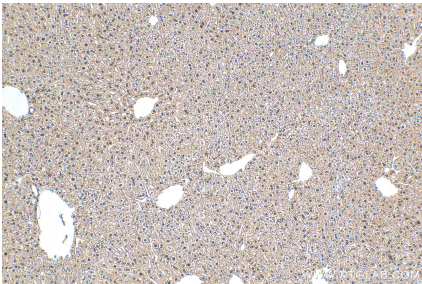
Various lysates were subjected to SDS PAGE followed by western blot with 82829-1-RR (CLOCK antibody) at dilution of 1:4000 incubated at room temperature for 1.5 hours.



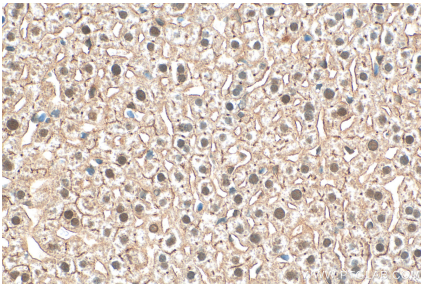
Various lysates were subjected to SDS PAGE followed by western blot with 82829-1-RR (CLOCK antibody) at dilution of 1:4000 incubated at room temperature for 1.5 hours.



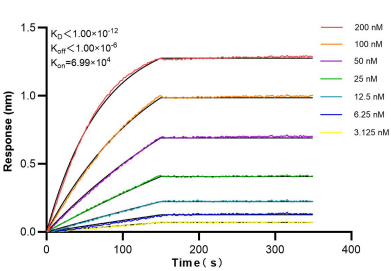
WB result of CLOCK antibody (82829-1-RR; 1:1000; incubated at room temperature for 1.5 hours) with sh-Control and sh-CLOCK transfected HeLa cells.



Immunohistochemical analysis of paraffin-embedded mouse liver tissue slide using 82829-1-RR (CLOCK antibody) at dilution of 1:400 (under 10x lens). Heat mediated antigen retrieval with Tris-EDTA buffer (pH 9.0).



Immunohistochemical analysis of paraffin-embedded mouse liver tissue slide using 82829-1-RR (CLOCK antibody) at dilution of 1:400 (under 40x lens). Heat mediated antigen retrieval with Tris-EDTA buffer (pH 9.0).



Biolayer interferometry (BLI) kinetic assays of 82829-1-RR against Human CLOCK were performed. The affinity constant is below 1 pM.