

For Research Use Only

Di-Methyl-Histone H3 (Lys56) Recombinant monoclonal antibody

Catalog Number: 82828-12-RR



Basic Information

Catalog Number:

82828-12-RR

Source:

Rabbit

Isotype:

IgG

GenBank Accession Number:

BC066245

GeneID (NCBI):

8350

UNIPROT ID:

P68431

Full Name:

histone cluster 1, H3a

Observed MW:

15-18 kDa

Purification Method:

Protein A purification

CloneNo.:

243027A1

Recommended Dilutions:

WB: 1:500-1:2000

IF/ICC: 1:250-1:1000

Dot Blot: 1:10-1:100

Applications

Tested Applications:

WB, IF/ICC, Dot Blot, ELISA

Species Specificity:

human, mouse, rat

Positive Controls:

WB : HeLa cells, HepG2 cells, NIH/3T3 cells, HSC-T6 cells

IF/ICC : HepG2 cells, NIH/3T3 cells

Dot Blot : peptide,

Background Information

Histones, including H1/H5 (linker histones), H2, H3, and H4 (core histones), are nucleic proteins which interact with DNA to form the nucleosomes and play important roles in gene regulation and DNA replication. Histone proteins are highly post-translationally modified while Histone H3 is the most extensively modified. The NSD family histone methyltransferases, including NSD1, NSD2 and NSD3, play crucial roles in chromatin regulation and are implicated in oncogenesis (PMID: 33361816).

Storage

Storage:

Store at -20°C. Stable for one year after shipment.

Storage Buffer:

PBS with 0.02% sodium azide and 50% glycerol, pH7.3

Aliquoting is unnecessary for -20°C storage

For technical support and original validation data for this product please contact:

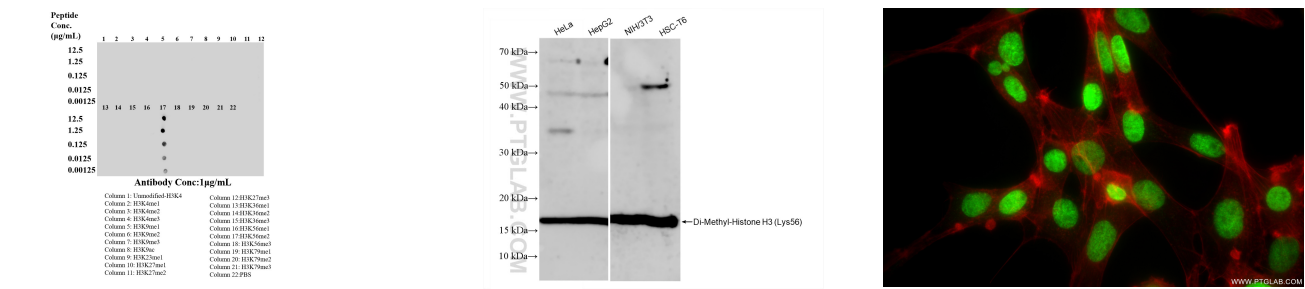
T: 4006900926

E: Proteintech-CN@ptglab.com

W: ptgcn.com

This product is exclusively available under Proteintech Group brand and is not available to purchase from any other manufacturer.

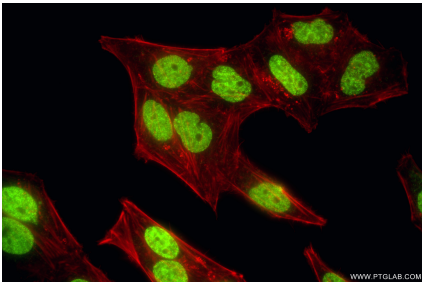
Selected Validation Data



Dot blot analysis was used to confirm the specificity of 82828-12-RR (Di-Methyl-Histone H3 (Lys56) antibody. Peptides were spotted onto NC and probed with antibody at 1 µg/ml. The amount of peptide (µ g/mL) spotted is indicated next to each row.

Various lysates were subjected to SDS PAGE followed by western blot with 82828-12-RR (HIST1H3A(H3K56me2) antibody) at dilution of 1:1000 incubated at room temperature for 1.5 hours.

Immunofluorescent analysis of (4% PFA) fixed NIH/3T3 cells using Di-Methyl-Histone H3 (Lys56) antibody (82828-12-RR, Clone: 243027A1) at dilution of 1:500 and CoraLite®488-Conjugated Goat Anti-Rabbit IgG(H+L) (SA00013-2), CL594-Phalloidin (red).



Immunofluorescent analysis of (4% PFA) fixed HepG2 cells using Di-Methyl-Histone H3 (Lys56) antibody (82828-12-RR, Clone: 243027A1) at dilution of 1:500 and CoraLite®488-Conjugated Goat Anti-Rabbit IgG(H+L) (SA00013-2), CL594-Phalloidin (red).