

For Research Use Only

# Mono-Methyl-Histone H3 (Lys36) Recombinant antibody, PBS Only

Catalog Number: 82825-2-PBS



## Basic Information

Catalog Number:

82825-2-PBS

Size:

1 mg/ml

Source:

Rabbit

Isotype:

IgG

GenBank Accession Number:

BC066245

GeneID (NCBI):

8350

UNIPROT ID:

P68431

Full Name:

histone cluster 1, H3a

Observed MW:

15 kDa

Purification Method:

Protein A purification

CloneNo.:

241138B6

## Applications

Tested Applications:

WB, IF/ICC, FC (Intra), Dot Blot, Indirect ELISA

Species Specificity:

human, mouse, rat

## Background Information

Histones, including H1/H5 (linker histones), H2, H3, and H4 (core histones), are nucleic proteins which interact with DNA to form the nucleosomes and play important roles in gene regulation and DNA replication. Histone proteins are highly post-translationally modified while Histone H3 is the most extensively modified.

## Storage

Storage:

Store at -80°C.

**The product is shipped with ice packs. Upon receipt, store it immediately at -80°C**

Storage Buffer:

PBS Only

For technical support and original validation data for this product please contact:

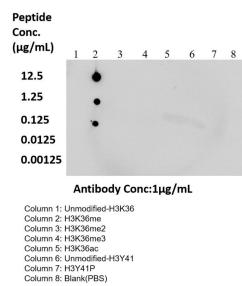
T: 4006900926

E: [Proteintech-CN@ptglab.com](mailto:Proteintech-CN@ptglab.com)

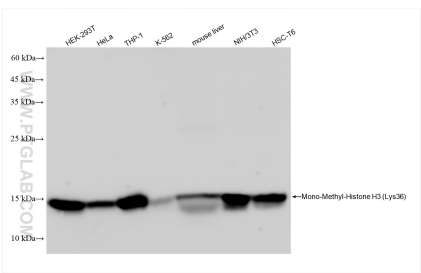
W: [ptgcn.com](http://ptgcn.com)

**This product is exclusively available under Proteintech Group brand and is not available to purchase from any other manufacturer.**

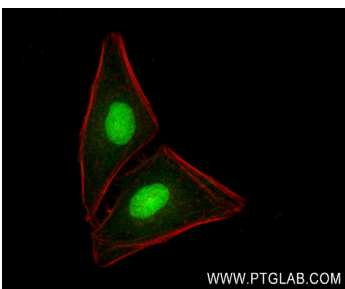
## Selected Validation Data



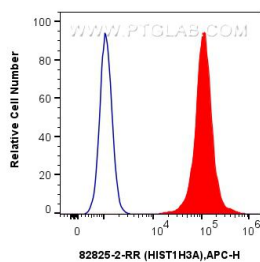
Dot blot analysis was used to confirm the specificity of Mono-Methyl-Histone H3 (Lys36) antibody. Acetylated peptides were spotted onto NC and probed with antibody at 1 μg/mL. The amount of peptide ( μ g/mL) spotted is indicated next to each row. This data was developed using the same antibody clone with 82825-2-PBS in a different storage buffer formulation.



Various lysates were subjected to SDS PAGE followed by western blot with 82825-2-RR (HIST1H3A antibody) at dilution of 1:10000 incubated at room temperature for 1.5 hours. This data was developed using the same antibody clone with 82825-2-PBS in a different storage buffer formulation.



Immunofluorescent analysis of (4% PFA) fixed HeLa cells using Mono-Methyl-Histone H3 (Lys36) antibody (82825-2-RR, Clone: 241138B6) at dilution of 1:400 and CoraLite@488-Conjugated Goat Anti-Rabbit IgG(H+L) (SA00013-2), CL594-Phalloidin (red). This data was developed using the same antibody clone with 82825-2-PBS in a different storage buffer formulation.



1x10<sup>6</sup> HeLa cells were intracellularly stained with 0.25 ug Hist1h3a Recombinant Antibody (82825-2-RR, Clone:241138B6) and APC-Conjugated Goat Anti-Rabbit IgG(H+L)(red), or 0.25 ug Isotype Control (blue). Cells were fixed and permeabilized with True-Nuclear Transcription Factor Buffer Set. This data was developed using the same antibody clone with 82825-2-PBS in a different storage buffer formulation.