

For Research Use Only

GH1 Recombinant antibody, PBS Only (Detector)

Catalog Number: 82813-9-PBS



Basic Information

Catalog Number:

82813-9-PBS

Concentration:

1 mg/ml

Source:

Rabbit

Isotype:

IgG

Immunogen Catalog Number:

HZ-1007

GenBank Accession Number:

BC075012

GeneID (NCBI):

2688

UNIPROT ID:

P01241

Full Name:

GH1

Calculated MW:

217 aa, 25 kDa

Purification Method:

Protein A purification

CloneNo.:

250390B5

Applications

Tested Applications:

Sandwich ELISA, Indirect ELISA, Sample test

Species Specificity:

human

Background Information

Storage

Storage:

Store at -80°C.

The product is shipped with ice packs. Upon receipt, store it immediately at -80°C

Storage Buffer:

PBS only, pH7.3

For technical support and original validation data for this product please contact:

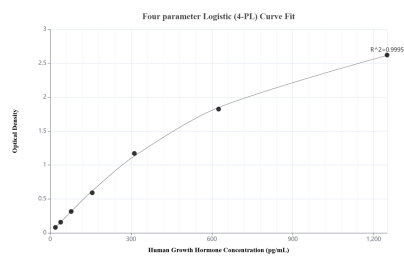
T: 4006900926

E: Proteintech-CN@ptglab.com

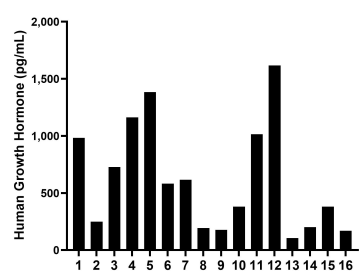
W: ptgcn.com

This product is exclusively available under Proteintech Group brand and is not available to purchase from any other manufacturer.

Selected Validation Data



Sandwich ELISA standard curve of MP02272-1, Human Growth Hormone Recombinant Matched Antibody Pair - PBS only. 82813-8-PBS was coated to a plate as the capture antibody and incubated with serial dilutions of standard HZ-1007. 82813-9-PBS was HRP conjugated as the detection antibody. Range: 19.5-1250 pg/mL.



Serum of sixteen individual healthy human donors was measured. The Growth Hormone concentration of detected samples was determined to be 622.3 pg/mL with a range of 106.6-1,616.6 pg/mL.