

For Research Use Only

# CISD2 Recombinant antibody

Catalog Number: 82802-10-RR



## Basic Information

<b>Catalog Number:</b> 82802-10-RR	<b>GenBank Accession Number:</b> BC032300	<b>Purification Method:</b> Protein A purification
<b>Size:</b> 250 µg/ml	<b>GeneID (NCBI):</b> 493856	<b>CloneNo.:</b> 6H13
<b>Source:</b> Rabbit	<b>UNIPROT ID:</b> Q8N5K1	<b>Recommended Dilutions:</b> WB 1:1000-1:5000
<b>Isotype:</b> IgG	<b>Full Name:</b> CDGSH iron sulfur domain 2	
<b>Immunogen Catalog Number:</b> AG4172	<b>Calculated MW:</b> 135 aa, 15 kDa	
	<b>Observed MW:</b> 15 kDa	

## Applications

**Tested Applications:**  
WB, ELISA

**Species Specificity:**  
Human

**Positive Controls:**

WB : HepG2 cells, HuH-7 cells, L02 cells, K-562 cells

## Background Information

CISD2 gene encodes a 15 kDa CDGSH iron-sulfur domain-containing protein 2, which is also named Miner1 or NAF-1, this protein was reported on endoplasmic reticulum membrane or mitochondrion outer membrane. Defects in CISD2 are the cause of Wolfram syndrome type 2 (WFS2), a rare disorder characterized by juvenile-onset insulin-dependent diabetes mellitus with optic atrophy. CISD2 regulates autophagy program by interacting BCL2, contributing to antagonize BECN1-mediated cellular autophagy at the endoplasmic reticulum.

## Storage

**Storage:**  
Store at -20°C. Stable for one year after shipment.

**Storage Buffer:**  
PBS with 0.02% sodium azide and 50% glycerol pH 7.3.

Aliquoting is unnecessary for -20°C storage

For technical support and original validation data for this product please contact:

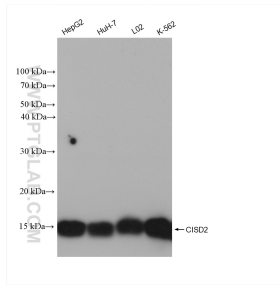
T: 4006900926

E: Proteintech-CN@ptglab.com

W: ptgcn.com

This product is exclusively available under Proteintech Group brand and is not available to purchase from any other manufacturer.

## Selected Validation Data



Various lysates were subjected to SDS PAGE followed by western blot with 82802-10-RR (CISD2 antibody) at dilution of 1:2500 incubated at room temperature for 1.5 hours.