

Lamin B2 Recombinant antibody

Catalog Number: 82801-4-RR

Basic Information

Catalog Number:

82801-4-RR

Size:

1000 ug/ml

Source:

Rabbit

Isotype:

IgG

Immunogen Catalog Number:

AG1335

GenBank Accession Number:

BC006551

GeneID (NCBI):

84823

UNIPROT ID:

Q03252

Full Name:

lamin B2

Calculated MW:

68 kDa

Observed MW:

68 kDa

Purification Method:

Protein A purification

CloneNo.:

230184C7

Recommended Dilutions:

WB 1:5000-1:50000

IF/ICC 1:200-1:800

Applications

Tested Applications:

WB, IF/ICC, FC (Intra), ELISA

Species Specificity:

human

Positive Controls:

WB : HeLa cells, Jurkat cells, HepG2 cells, Raji cells, A549 cells

IF/ICC : HepG2 cells,

Background Information

Lamins are nuclear membrane structural components that are important in structural integrity of the nucleus and may also interact with chromatin (PMID: 33033404). Research studies show that lamin B2 knockout mice exhibit neuronal developmental defects and that both proteins are essential for typical brain development (PMID: 20145110). Mutations in Lamin B2 can result in a susceptibility to developing acquired partial lipodystrophy, a rare disorder characterized by the progressive loss of subcutaneous fat in a bilaterally symmetrical fashion (PMID: 16826530).

Storage

Storage:

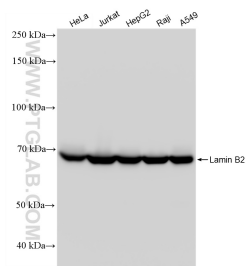
Store at -20°C. Stable for one year after shipment.

Storage Buffer:

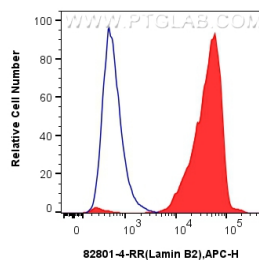
PBS with 0.02% sodium azide and 50% glycerol pH 7.3.

Aliquoting is unnecessary for -20°C storage

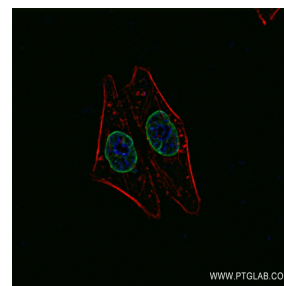
Selected Validation Data



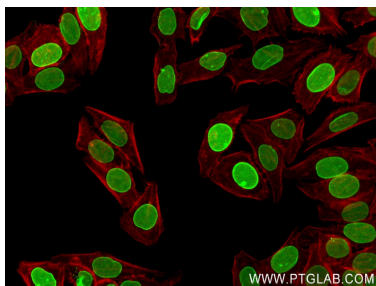
Various lysates were subjected to SDS PAGE followed by western blot with 82801-4-RR (Lamin B2 antibody) at dilution of 1:10000 incubated at room temperature for 1.5 hours.



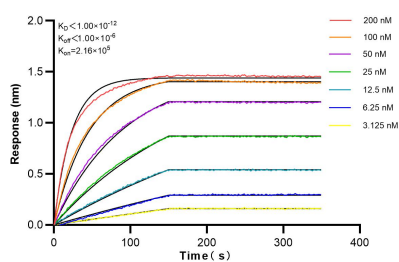
1×10^6 HepG2 cells were intracellularly stained with 0.25 μ g Lamin B2 Recombinant antibody (82801-4-RR, Clone:230184C7) and APC-Conjugated AffiniPure Goat Anti-Rabbit IgG(H+L) (red), or 0.25 μ g Isotype Control (blue). Cells were fixed and permeabilized with True-Nuclear Transcription Factor Buffer Set.



Immunofluorescent analysis of (4% PFA) fixed HepG2 cells using Lamin B2 antibody (82801-4-RR, Clone: 230184C7) at dilution of 1:400 and CoraLite®488-Conjugated AffiniPure Goat Anti-Rabbit IgG(H+L) (SA00013-2).



Immunofluorescent analysis of (4% PFA) fixed HepG2 cells using Lamin B2 antibody (82801-4-RR, Clone: 230184C7) at dilution of 1:400 and CoraLite®488-Conjugated Goat Anti-Rabbit IgG(H+L) (SA00013-2), CL594-Phalloidin (red).



Biolayer interferometry (BLI) kinetic assays of 82801-4-RR against Human Lamin B2 were performed. The affinity constant is below 1 pM.