

For Research Use Only

# Lamin B2 Recombinant antibody, PBS Only



Catalog Number: 82801-2-PBS

## Basic Information

Catalog Number: 82801-2-PBS	GenBank Accession Number: BC006551	Purification Method: Protein A purification
Size: 1mg/ml	GeneID (NCBI): 84823	CloneNo.: 230184E7
Source: Rabbit	UNIPROT ID: Q03252	
Isotype: IgG	Full Name: lamin B2	
Immunogen Catalog Number: AG1335	Calculated MW: 68 kDa	
	Observed MW: 68 kDa	

## Applications

Tested Applications:  
Indirect ELISA, IF/ICC, WB

Species Specificity:  
human

## Background Information

Lamins are nuclear membrane structural components that are important in structural integrity of the nucleus and may also interact with chromatin (PMID: 33033404). Research studies show that lamin B2 knockout mice exhibit neuronal developmental defects and that both proteins are essential for typical brain development (PMID: 20145110). Mutations in Lamin B2 can result in a susceptibility to developing acquired partial lipodystrophy, a rare disorder characterized by the progressive loss of subcutaneous fat in a bilaterally symmetrical fashion (PMID: 16826530).

## Storage

Storage:  
Store at -80°C.  
**The product is shipped with ice packs. Upon receipt, store it immediately at -80°C**  
Storage Buffer:  
PBS Only

For technical support and original validation data for this product please contact:

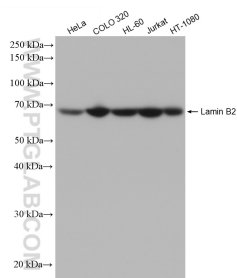
T: 4006900926

E: [Proteintech-CN@ptglab.com](mailto:Proteintech-CN@ptglab.com)

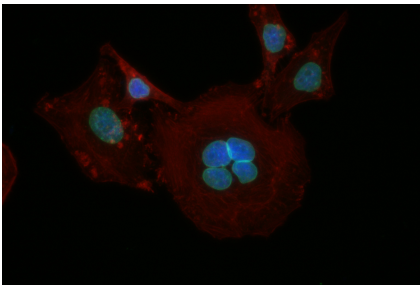
W: [ptgcn.com](http://ptgcn.com)

**This product is exclusively available under Proteintech Group brand and is not available to purchase from any other manufacturer.**

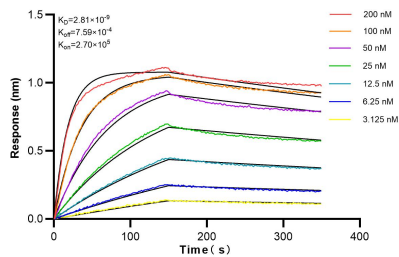
## Selected Validation Data



Various lysates were subjected to SDS PAGE followed by western blot with 82801-2-RR (Lamin B2 antibody) at dilution of 1:4000 incubated at room temperature for 1.5 hours. This data was developed using the same antibody clone with 82801-2-PBS in a different storage buffer formulation.



Immunofluorescent analysis of (4% PFA) fixed HepG2 cells using Lamin B2 antibody (82801-2-RR, Clone: 230184E7) at dilution of 1:400 and CoraLite®488-Conjugated AffiniPure Goat Anti-Rabbit IgG(H+L). This data was developed using the same antibody clone with 82801-2-PBS in a different storage buffer formulation.



Biolayer interferometry (BLI) kinetic assays of 82801-2-RR against Human Lamin B2 were performed. The affinity constant is 2.81 nM.