

For Research Use Only

HBS1L Recombinant antibody

Catalog Number: 82795-2-RR



Basic Information

Catalog Number: 82795-2-RR	GenBank Accession Number: BC001465	Purification Method: Protein A purification
Size: 250 µg/ml	GeneID (NCBI): 10767	CloneNo.: 2L24
Source: Rabbit	UNIPROT ID: Q9Y450	Recommended Dilutions: WB 1:1000-1:5000
Isotype: IgG	Full Name: HBS1-like (<i>S. cerevisiae</i>)	
Immunogen Catalog Number: AG0388	Calculated MW: 75 kDa	
	Observed MW: 78 kDa	

Applications

Tested Applications: WB, ELISA	Positive Controls: WB : HeLa cells, HepG2 cells, HEK-293 cells
Species Specificity: Human	

Background Information

HBS1L (HBS1-like), also known as EF-1a or ERF5, is a 684 amino acid protein that belongs to the GTP-binding elongation factor family and exists as multiple alternatively spliced isoforms. Expressed in kidney, brain, heart, placenta, liver, muscle and pancreas, HSB1L is thought to play a role in controlling fetal hemoglobin levels, specifically influencing platelet, monocyte and erythrocyte hemoglobin content. The gene encoding HBS1L maps to a locus on human chromosome 6 that is associated with sickle cell anemia and beta-thalassemia, suggesting a role for HBS1L in the pathogenesis of blood disorders.

Storage

Storage:
Store at -20°C. Stable for one year after shipment.
Storage Buffer:
PBS with 0.02% sodium azide and 50% glycerol pH 7.3.
Aliquoting is unnecessary for -20°C storage

For technical support and original validation data for this product please contact:

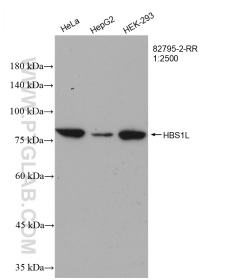
T: 4006900926

E: Proteintech-CN@ptglab.com

W: ptgcn.com

This product is exclusively available under Proteintech Group brand and is not available to purchase from any other manufacturer.

Selected Validation Data



Various lysates were subjected to SDS PAGE followed by western blot with 82795-2-RR (HBS1L antibody) at dilution of 1:2500 incubated at room temperature for 1.5 hours.