

For Research Use Only

# ENPP-2/Autotaxin Recombinant monoclonal antibody, PBS Only (Detector)

Catalog Number: 82789-9-PBS



## Basic Information

<b>Catalog Number:</b> 82789-9-PBS	<b>GenBank Accession Number:</b> NM_001040092.3	<b>Purification Method:</b> Protein A purification
<b>Source:</b> Rabbit	<b>GeneID (NCBI):</b> 5168	<b>CloneNo.:</b> 252235E11
<b>Isotype:</b> IgG	<b>UNIPROT ID:</b> Q13822-1	
<b>Immunogen Catalog Number:</b> EG7267	<b>Full Name:</b> ectonucleotide pyrophosphatase/phosphodiesterase 2	
	<b>Calculated MW:</b> 99 kDa	

## Applications

**Tested Applications:**  
Cytometric bead array, Sandwich ELISA, Indirect ELISA

**Species Specificity:**  
human

## Background Information

### Storage

**Storage:**  
Store at -80°C.  
**The product is shipped with ice packs. Upon receipt, store it immediately at -80°C**

**Storage Buffer:**  
PBS only, pH7.3

For technical support and original validation data for this product please contact:

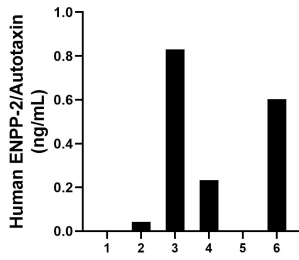
T: 4006900926

E: [Proteintech-CN@ptglab.com](mailto:Proteintech-CN@ptglab.com)

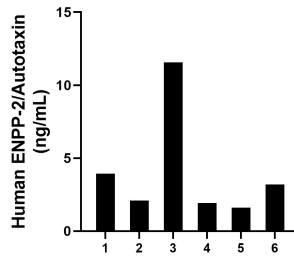
W: [ptgcn.com](http://ptgcn.com)

**This product is exclusively available under Proteintech Group brand and is not available to purchase from any other manufacturer.**

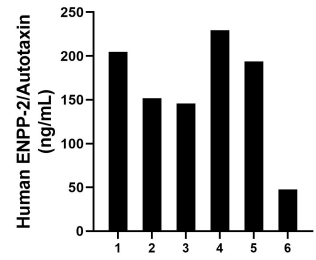
## Selected Validation Data



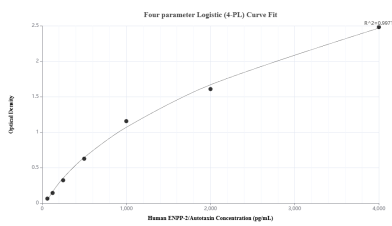
Urine of six individual healthy human donors was measured. The human ENPP-2/Autotaxin concentration of detected samples was determined to be 0.43 ng/mL with a range of 0 - 0.83 ng/mL.



Human milk of six individual healthy human donors was measured. The human ENPP-2/Autotaxin concentration of detected samples was determined to be 4.06 ng/mL with a range of 1.61 - 11.57 ng/mL.

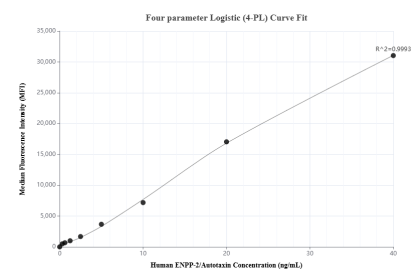


Plasma of six individual healthy human donors was measured. The human ENPP-2/Autotaxin concentration of detected samples was determined to be 162.15 ng/mL with a range of 47.54 - 229.51 ng/mL.



The mean ENPP-2/Autotaxin concentration was determined to be 325.7 ng/mL in human plasma.

Sandwich ELISA standard curve of MP02884-1, Human ENPP-2/Autotaxin Recombinant Matched Antibody Pair - PBS only. 82789-10-PBS was coated to a plate as the capture antibody and incubated with serial dilutions of standard Eg7267. 82789-9-PBS was HRP conjugated as the detection antibody. Range: 362.5-4000 pg/mL



Cytometric bead array standard curve of MP02884-1, ENPP-2/Autotaxin Recombinant Matched Antibody Pair, PBS Only. Capture antibody: 82789-10-PBS. Detection antibody: 82789-9-PBS. Standard: Eg7267. Range: 0.312-40 ng/mL