

For Research Use Only

ENPP-2/Autotaxin Recombinant monoclonal antibody, PBS Only (Capture)

Catalog Number: 82789-10-PBS



Basic Information

Catalog Number: 82789-10-PBS	GenBank Accession Number: NM_001040092.3	Purification Method: Protein A purification
Source: Rabbit	GeneID (NCBI): 5168	CloneNo.: 252235F1
Isotype: IgG	UNIPROT ID: Q13822-1	
Immunogen Catalog Number: EG7267	Full Name: ectonucleotide pyrophosphatase/phosphodiesterase 2	
	Calculated MW: 99 kDa	

Applications

Tested Applications:
Cytometric bead array, Sandwich ELISA, Indirect ELISA

Species Specificity:
human

Background Information

Storage

Storage:
Store at -80°C.
The product is shipped with ice packs. Upon receipt, store it immediately at -80°C

Storage Buffer:
PBS only, pH7.3

For technical support and original validation data for this product please contact:

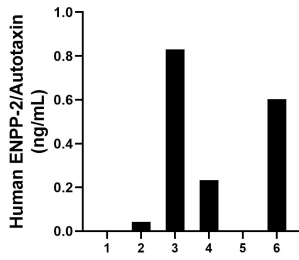
T: 4006900926

E: Proteintech-CN@ptglab.com

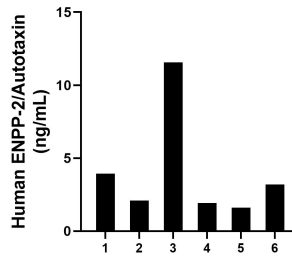
W: ptgcn.com

This product is exclusively available under Proteintech Group brand and is not available to purchase from any other manufacturer.

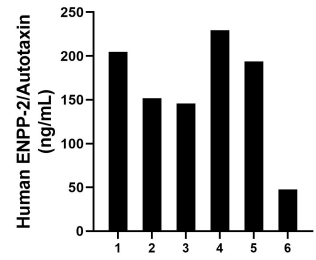
Selected Validation Data



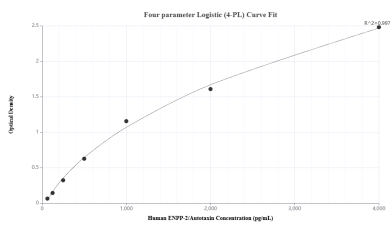
Urine of six individual healthy human donors was measured. The human ENPP-2/Autotaxin concentration of detected samples was determined to be 0.43 ng/mL with a range of 0 - 0.83 ng/mL.



Human milk of six individual healthy human donors was measured. The human ENPP-2/Autotaxin concentration of detected samples was determined to be 4.06 ng/mL with a range of 1.61 - 11.57 ng/mL.

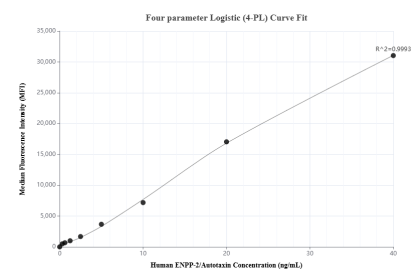


Plasma of six individual healthy human donors was measured. The human ENPP-2/Autotaxin concentration of detected samples was determined to be 162.15 ng/mL with a range of 47.54 - 229.51 ng/mL.



The mean ENPP-2/Autotaxin concentration was determined to be 325.7 ng/mL in human plasma.

Sandwich ELISA standard curve of MP02884-1, Human ENPP-2/Autotaxin Recombinant Matched Antibody Pair - PBS only. 82789-10-PBS was coated to a plate as the capture antibody and incubated with serial dilutions of standard Eg7267. 82789-9-PBS was HRP conjugated as the detection antibody. Range: 362.5-4000 pg/mL



Cytometric bead array standard curve of MP02884-1, ENPP-2/Autotaxin Recombinant Matched Antibody Pair, PBS Only. Capture antibody: 82789-10-PBS. Detection antibody: 82789-9-PBS. Standard: Eg7267. Range: 0.312-40 ng/mL