

For Research Use Only

Cannabinoid receptor 1 Recombinant antibody

Catalog Number: 82787-3-RR



Basic Information

Catalog Number:

82787-3-RR

Concentration:

Source:

Rabbit

Isotype:

IgG

Immunogen Catalog Number:

AG12625

GenBank Accession Number:

BC074812

GeneID (NCBI):

1268

UNIPROT ID:

P21554

Full Name:

cannabinoid receptor 1 (brain)

Calculated MW:

472 aa, 53 kDa

Observed MW:

60 kDa

Purification Method:

Protein A purification

CloneNo.:

250285B1

Recommended Dilutions:

WB: 1:5000-1:50000

Applications

Tested Applications:

WB, ELISA

Species Specificity:

human, mouse, rat

Positive Controls:

WB : fetal human brain tissue, mouse brain tissue, rat brain tissue

Background Information

Cannabinoid receptor 1 (CNR1, or CB1) and CNR2 (CB2) are members of the guanine-nucleotide-binding protein (G-protein) coupled receptor family. The CB1 receptor is expressed mainly in the brain. The CB2 receptor is expressed mainly in the immune system and in hematopoietic cells. The two receptors have been found to be involved in the cannabinoid-induced CNS effects (including alterations in mood and cognition) experienced by users of marijuana.

Storage

Storage:

Store at -20°C. Stable for one year after shipment.

Storage Buffer:

PBS with 0.02% sodium azide and 50% glycerol, pH7.3

Aliquoting is unnecessary for -20°C storage

For technical support and original validation data for this product please contact:

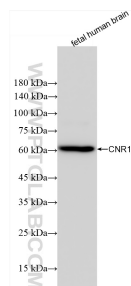
T: 4006900926

E: Proteintech-CN@ptglab.com

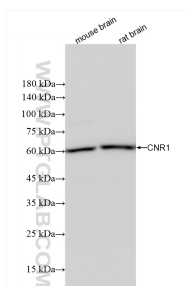
W: ptgcn.com

This product is exclusively available under Proteintech Group brand and is not available to purchase from any other manufacturer.

Selected Validation Data



fetal human brain tissue were subjected to SDS PAGE followed by western blot with 82787-3-RR (CNR1 antibody) at dilution of 1:10000 incubated at room temperature for 1.5 hours.



Various lysates were subjected to SDS PAGE followed by western blot with 82787-3-RR (CNR1 antibody) at dilution of 1:10000 incubated at room temperature for 1.5 hours.