

For Research Use Only

# CPEB1 Recombinant antibody

Catalog Number: 82785-1-RR



## Basic Information

Catalog Number:

82785-1-RR

Size:

400 ug/ml

Source:

Rabbit

Isotype:

IgG

Immunogen Catalog Number:

AG3994

GenBank Accession Number:

BC035348

GeneID (NCBI):

64506

UNIPROT ID:

Q9BZB8

Full Name:

cytoplasmic polyadenylation  
element binding protein 1

Calculated MW:

486 aa, 54 kDa

Observed MW:

63 kDa

Purification Method:

Protein A purification

CloneNo.:

6I9

Recommended Dilutions:

IF/ICC 1:200-1:800

## Applications

Tested Applications:

IF/ICC, ELISA

Species Specificity:

human

Positive Controls:

IF/ICC : HeLa cells,

## Background Information

CPEB1, also named as CEBP, CPEB and CPE-BP1, contains two RRM (RNA recognition motif) domains and belongs to the RRM CPEB family. It is a sequence-specific RNA-binding protein that regulates mRNA cytoplasmic polyadenylation and translation initiation during oocyte maturation, early development and at postsynapse sites of neurons. CPEB1 regulated translation is a key process involved in INS signaling.

## Storage

Storage:

Store at -20°C. Stable for one year after shipment.

Storage Buffer:

PBS with 0.02% sodium azide and 50% glycerol pH 7.3.

Aliquoting is unnecessary for -20°C storage

For technical support and original validation data for this product please contact:

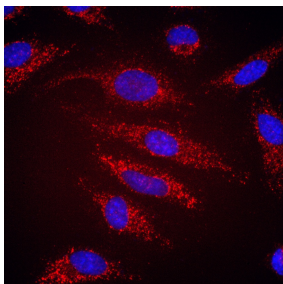
T: 4006900926

E: [Proteintech-CN@ptglab.com](mailto:Proteintech-CN@ptglab.com)

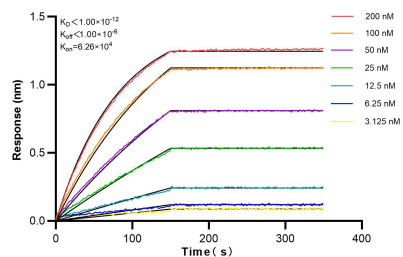
W: [ptgcn.com](http://ptgcn.com)

This product is exclusively available under Proteintech Group brand and is not available to purchase from any other manufacturer.

## Selected Validation Data



Immunofluorescent analysis of (-20°C Ethanol) fixed HeLa cells using CPEB1 antibody (82785-1-RR, Clone: 6I9) at dilution of 1:400 and Multi-rAb CoraLite® Plus 594-Goat Anti-Rabbit Recombinant Secondary Antibody (H+L) (RGAR004).



Biolayer interferometry (BLI) kinetic assays of 82785-1-RR against Human CPEB1 were performed. The affinity constant is below 1 pM.