

For Research Use Only

IL-22 Recombinant antibody, PBS Only (Capture)

Catalog Number: 82766-12-PBS



Basic Information

Catalog Number:

82766-12-PBS

Size:

1 mg/ml

Source:

Rabbit

Isotype:

IgG

GenBank Accession Number:

BC070261

GeneID (NCBI):

50616

UNIPROT ID:

Q9GZX6

Full Name:

interleukin 22

Calculated MW:

179 aa, 20 kDa

Purification Method:

Protein A purification

CloneNo.:

240699D1

Applications

Tested Applications:

Cytometric bead array, Sandwich ELISA, Indirect ELISA, Sample test

Species Specificity:

human

Background Information

Storage

Storage:

Store at -80°C.

The product is shipped with ice packs. Upon receipt, store it immediately at -80°C

Storage Buffer:

PBS Only

For technical support and original validation data for this product please contact:

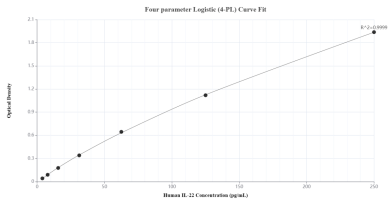
T: 4006900926

E: Proteintech-CN@ptglab.com

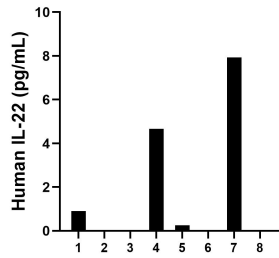
W: ptgcn.com

This product is exclusively available under Proteintech Group brand and is not available to purchase from any other manufacturer.

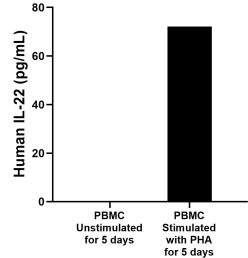
Selected Validation Data



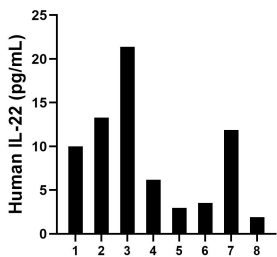
Sandwich ELISA standard curve of MP00657-2, Human IL-22 Recombinant Matched Antibody Pair - PBS only. 82766-12-PBS was coated to a plate as the capture antibody and incubated with serial dilutions of standard Eg0228. 82766-11-PBS was HRP conjugated as the detection antibody. Range: 3.91-250 pg/mL.



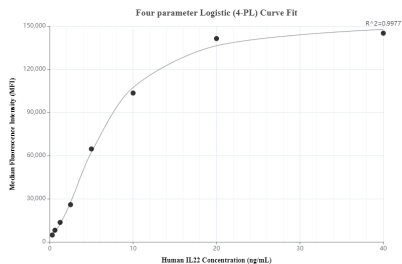
Urine of eight individual healthy human donors was measured. The IL-22 concentration of detected samples was determined to be 2.8 pg/mL with a range of ND - 7.9 pg/mL.



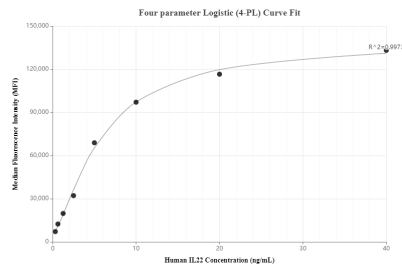
Human peripheral blood mononuclear cells (PBMC) were cultured unstimulated or stimulated with 10 μ g/mL PHA for 5 days. The mean IL-22 concentration was not determined in unstimulated PBMC supernatant, 72.1 pg/mL in PHA stimulated PBMC supernatant.



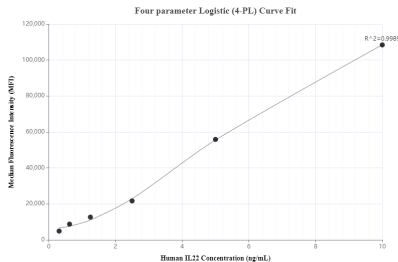
Serum of eight individual healthy human donors was measured. The IL-22 concentration of detected samples was determined to be 8.9 pg/mL with a range of ND - 21.4 pg/mL.



Cytometric bead array standard curve of MP00657-1, IL-22 Recombinant Matched Antibody Pair, PBS Only. Capture antibody: 82766-12-PBS. Detection antibody: 82766-13-PBS. Standard: Eg0228. Range: 0.313-40 ng/mL.



Cytometric bead array standard curve of MP00657-2, IL-22 Recombinant Matched Antibody Pair, PBS Only. Capture antibody: 82766-12-PBS. Detection antibody: 82766-11-PBS. Standard: Eg0228. Range: 0.313-40 ng/mL.



Cytometric bead array standard curve of MP00657-3, IL-22 Recombinant Matched Antibody Pair, PBS Only. Capture antibody: 82766-12-PBS. Detection antibody: 82766-14-PBS. Standard: Eg0228. Range: 0.313-10 ng/mL.