

For Research Use Only

Phospho-HER2/ErbB2 (Tyr877) Recombinant monoclonal antibody, PBS Only

Catalog Number: 82762-11-PBS



Basic Information

Catalog Number: 82762-11-PBS	GenBank Accession Number: BC156755	Purification Method: Protein A purification
Source: Rabbit	GeneID (NCBI): 2064	CloneNo.: 250539F5
Isotype: IgG	UNIPROT ID: P04626	
	Full Name: v-erb-b2 erythroblastic leukemia viral oncogene homolog 2, neuro/glioblastoma derived oncogene homolog (avian)	
	Calculated MW: 1255 aa, 138 kDa	
	Observed MW: 185 kDa	

Applications

Tested Applications:
WB, IF/ICC, FC (Intra), Indirect ELISA

Species Specificity:
human

Background Information

HER2, also known as ErbB2 and Neu, is a 185-kDa transmembrane glycoprotein that is a member of the epidermal growth factor (EGF) receptor family of receptor tyrosine kinases. Phospho-HER2/ErbB2 (Tyr877) refers to the phosphorylated form of the human epidermal growth-factor receptor 2 (HER2, ErbB2) at tyrosine 877 within its kinase domain. This phosphorylation event is catalyzed in trans by dimerization-activated HER2 itself or by Src-family kinases (SFKs) upon receptor clustering, and serves as a critical activation switch for downstream signaling cascades. (PMID: 34107301)

Storage

Storage:
Store at -80°C.
The product is shipped with ice packs. Upon receipt, store it immediately at -80°C

Storage Buffer:
PBS only, pH7.3

For technical support and original validation data for this product please contact:

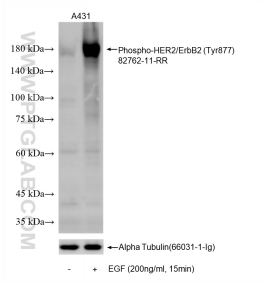
T: 4006900926

E: Proteintech-CN@ptglab.com

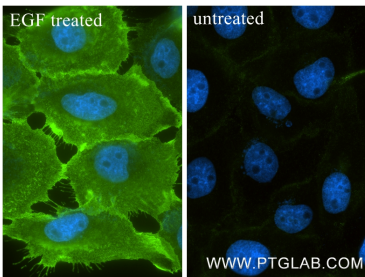
W: ptgcn.com

This product is exclusively available under Proteintech Group brand and is not available to purchase from any other manufacturer.

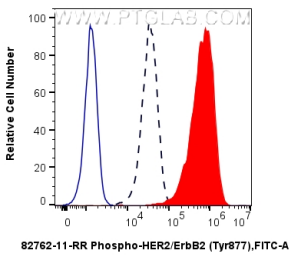
Selected Validation Data



Non-treated A431 cells and EGF (HZ-1326) treated A431 cells were subjected to SDS PAGE followed by western blot with 82762-11-RR (Phospho-HER2/ErbB2 (Tyr877) antibody) at dilution of 1:2000 incubated at room temperature for 1.5 hours. The membrane was stripped and re-blotted with Alpha Tubulin (66031-1-Ig) antibody as a loading control. This data was developed using the same antibody clone with 82762-11-PBS in a different storage buffer formulation.



Immunofluorescent analysis of (4% PFA) fixed EGF treated A431 cells using Phospho-HER2/ErbB2 (Tyr877) antibody (82762-11-RR, Clone: 250539F5) at dilution of 1:1000 and CoraLite®488-Conjugated Goat Anti-Rabbit IgG(H+L) (SA00013-2). This data was developed using the same antibody clone with 82762-11-PBS in a different storage buffer formulation.



1X10⁶ A431 cells untreated (dashed lines) or treated with EGF which intracellularly stained with 0.25 ug Phospho-HER2/ErbB2 (Tyr877) Recombinant monoclonal antibody (82762-11-RR, Clone:250539F5) and CoraLite®488-Conjugated Goat Anti-Rabbit IgG(H+L) (SA00013-2)(red), or 0.25 ug Rabbit IgG Isotype Control RecAb (98136-1-RR, Clone: 240953C9) (blue). Cells were fixed and permeabilized with Flow Cytometry Phosphorylated Protein