

For Research Use Only

# IGF2BP2 Recombinant antibody

Catalog Number: 82757-2-RR



## Basic Information

Catalog Number:

82757-2-RR

Size:

500 ug/ml

Source:

Rabbit

Isotype:

IgG

Immunogen Catalog Number:

AG2142

GenBank Accession Number:

BC021290

GeneID (NCBI):

10644

UNIPROT ID:

Q9Y6M1

Full Name:

insulin-like growth factor 2 mRNA  
binding protein 2

Calculated MW:

594 aa, 65 kDa

Observed MW:

55-65 kDa

Purification Method:

Protein A purification

CloneNo.:

6L8

Recommended Dilutions:

WB 1:2000-1:10000

IP 0.5-4.0 ug for 1.0-3.0 mg of total  
protein lysate

IHC 1:500-1:2000

## Applications

Tested Applications:

WB, IHC, IP, ELISA

Species Specificity:

human, mouse, rat

**Note-IHC: suggested antigen retrieval with  
TE buffer pH 9.0; (\*) Alternatively, antigen  
retrieval may be performed with citrate  
buffer pH 6.0**

Positive Controls:

WB: HeLa cells, mouse kidney tissue, rat kidney tissue

IP: HEK-293 cells,

IHC: mouse kidney tissue, human pancreas cancer  
tissue

## Background Information

Insulin-like growth factor 2 mRNA-binding protein 2 (IGF2BP2), is a member of a family of mRNA binding protein, which can bind to several mammalian cells' mRNAs. Thus it may involve in the regulation of translation of mRNA. IGF2BP2's polymorphisms is risk factor for developing type 2 diabetes. This antibody raise against part of N-terminus of human IGF2BP2. IGF2BP2 has some isoforms with the MW of 54-66 kDa. Some literature has reported that multiple bands can be detected (PMID: 22427968, 36322753, 23069990).

## Storage

Storage:

Store at -20°C. Stable for one year after shipment.

Storage Buffer:

PBS with 0.02% sodium azide and 50% glycerol pH 7.3.

Aliquoting is unnecessary for -20°C storage

For technical support and original validation data for this product please contact:

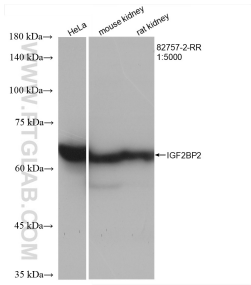
T: 4006900926

E: Proteintech-CN@ptglab.com

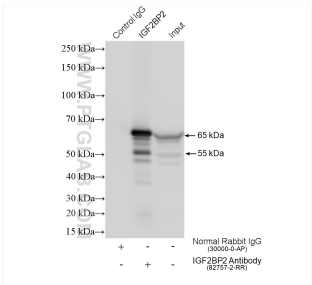
W: ptgcn.com

This product is exclusively available under Proteintech Group brand and is not available to purchase from any other manufacturer.

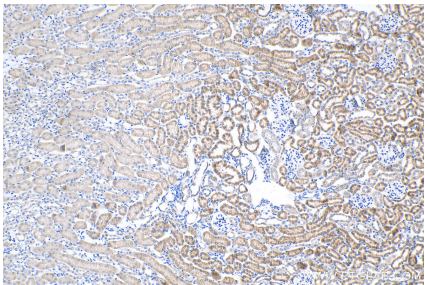
Selected Validation Data



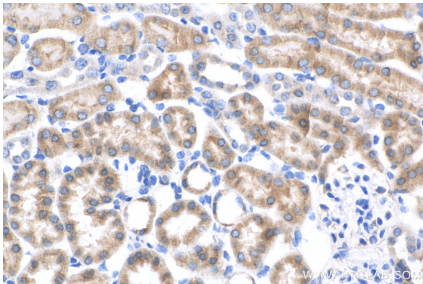
Various lysates were subjected to SDS PAGE followed by western blot with 82757-2-RR (IGF2BP2 antibody) at dilution of 1:5000 incubated at room temperature for 1.5 hours.



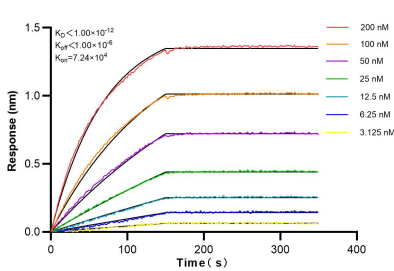
IP result of anti-IGF2BP2 (IP:82757-2-RR, 4ug; Detection:82757-2-RR 1:4000) with HEK-293 cells lysate 1480 ug.



Immunohistochemical analysis of paraffin-embedded mouse kidney tissue slide using 82757-2-RR (IGF2BP2 antibody) at dilution of 1:1000 (under 10x lens). Heat mediated antigen retrieval with Tris-EDTA buffer (pH 9.0).



Immunohistochemical analysis of paraffin-embedded mouse kidney tissue slide using 82757-2-RR (IGF2BP2 antibody) at dilution of 1:1000 (under 40x lens). Heat mediated antigen retrieval with Tris-EDTA buffer (pH 9.0).



Biolayer interferometry (BLI) kinetic assays of 82757-2-RR against Human IGF2BP2 were performed. The affinity constant is below 1 pM.