

For Research Use Only

# Phospho-CDK1 (Tyr15) Recombinant antibody, PBS Only

Catalog Number: 82751-5-PBS



## Basic Information

Catalog Number:

82751-5-PBS

Concentration:

1 mg/ml

Source:

Rabbit

Isotype:

IgG

GenBank Accession Number:

BC014563

GeneID (NCBI):

983

UNIPROT ID:

P06493

Full Name:

cell division cycle 2, G1 to S and G2 to M

Calculated MW:

25 kDa

Observed MW:

35 kDa

Purification Method:

Protein A purification

CloneNo.:

251130A5

## Applications

Tested Applications:

WB, Indirect ELISA

Species Specificity:

human

## Background Information

CDK1, also named as CDC2, belongs to the protein kinase superfamily, CMGC Ser/Thr protein kinase family and CDC2/CDKX subfamily. Phospho-CDK1 (Tyr15) is the inactive, inhibited form of cyclin-dependent kinase 1 (CDK1) generated when the tyrosine 15 residue of CDK1's ATP-binding loop is phosphorylated by the kinases WEE1 and PKMYT1. This single phosphorylation event clamps the kinase in an inactive conformation, preventing premature onset of mitosis by blocking ATP binding and cyclin B1 activation. (PMID: 14645578)

## Storage

Storage:

Store at -80°C.

**The product is shipped with ice packs. Upon receipt, store it immediately at -80°C**

Storage Buffer:

PBS only, pH7.3

For technical support and original validation data for this product please contact:

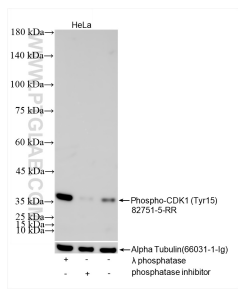
T: 4006900926

E: [Proteintech-CN@ptglab.com](mailto:Proteintech-CN@ptglab.com)

W: [ptgcn.com](http://ptgcn.com)

**This product is exclusively available under Proteintech Group brand and is not available to purchase from any other manufacturer.**

## Selected Validation Data



Non-treated HeLa cells, phosphatase inhibitor treated HeLa cells and  $\lambda$  phosphatase treated HeLa cells were subjected to SDS PAGE followed by western blot with 82751-5-RR (Phospho-CDK1 (Tyr15) antibody) at dilution of 1:4000 incubated at room temperature for 1.5 hours. The membrane was stripped and re-blotted with Alpha Tubulin (66031-1-Ig) antibody as a loading control. This data was developed using the same antibody clone with 82751-5-PBS in a different storage buffer