

# TOP2A Recombinant antibody, PBS Only

Catalog Number: 82738-4-PBS

## Basic Information

Catalog Number: 82738-4-PBS	GenBank Accession Number: BC140791	Purification Method: Protein A purification
Size: 1mg/ml	GeneID (NCBI): 7153	CloneNo.: 1J18
Source: Rabbit	UNIPROT ID: P11388	
Isotype: IgG	Full Name: topoisomerase (DNA) II alpha 170kDa	
Immunogen Catalog Number: AG19551	Calculated MW: 1531 aa, 174 kDa	
	Observed MW: ~170 kDa	

## Applications

Tested Applications:  
WB, IP, IF, Indirect ELISA

Species Specificity:  
Human

## Background Information

TOP2A, also named as TOP2, belongs to the type II topoisomerase family. Topoisomerase II makes double-strand breaks. TOP2 control the topological states of DNA by transient breakage and subsequent rejoining of DNA strands. TOP2A may play a role in regulating the period length of ARNTL/BMAL1 transcriptional oscillation. DNA topoisomerase IIa (170 kDa, TOP2a/170) is essential in proliferating cells by resolving DNA topological entanglements during chromosome condensation, replication, and segregation.

## Storage

Storage:  
Store at -80°C.

The product is shipped with ice packs. Upon receipt, store it immediately at -80°C

Storage Buffer:  
PBS Only

For technical support and original validation data for this product please contact:

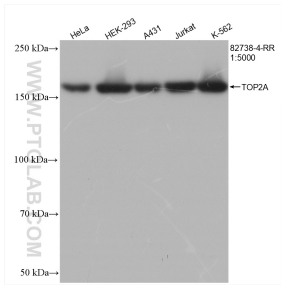
T: 4006900926

E: [Proteintech-CN@ptglab.com](mailto:Proteintech-CN@ptglab.com)

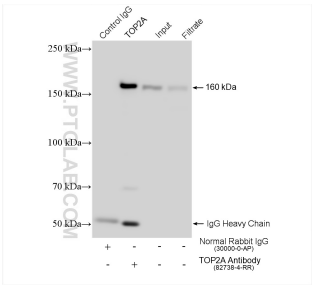
W: [ptgcn.com](http://ptgcn.com)

This product is exclusively available under Proteintech Group brand and is not available to purchase from any other manufacturer.

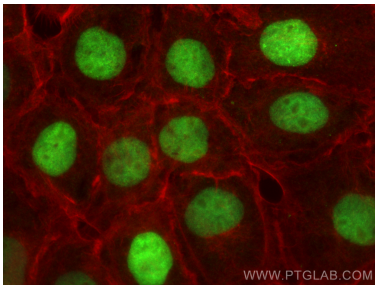
Selected Validation Data



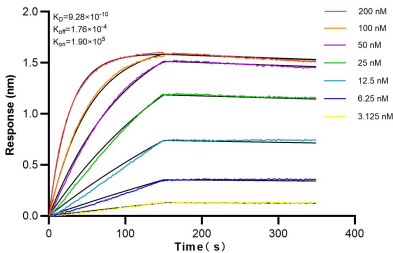
Various lysates were subjected to SDS PAGE followed by western blot with 82738-4-RR (TOP2A antibody) at dilution of 1:5000 incubated at room temperature for 1.5 hours. This data was developed using the same antibody clone with 82738-4-PBS in a different storage buffer formulation.



IP result of anti-TOP2A (IP: 82738-4-RR, 4ug; Detection: 82738-4-RR 1:2000) with HeLa cells lysate 1280 ug. This data was developed using the same antibody clone with 82738-4-PBS in a different storage buffer formulation.



Immunofluorescent analysis of (4% PFA) fixed A431 cells using TOP2A antibody (82738-4-RR, Clone: 1J18) at dilution of 1:500 and CoraLite®488-Conjugated AffiniPure Goat Anti-Rabbit IgG(H+L) (SA00013-2), (red). This data was developed using the same antibody clone with 82738-4-PBS in a different storage buffer formulation.



Biolayer interferometry (BLI) kinetic assays of 82738-4-RR against Human TOP2A were performed. The affinity constant is 0.928 nM.