

For Research Use Only

# IRS1 Recombinant antibody, PBS Only

Catalog Number: 82730-10-PBS



## Basic Information

Catalog Number:

82730-10-PBS

Concentration:

1 mg/ml

Source:

Rabbit

Isotype:

IgG

Immunogen Catalog Number:

AG11714

GenBank Accession Number:

BC053895

GeneID (NCBI):

3667

UNIPROT ID:

P35568

Full Name:

insulin receptor substrate 1

Calculated MW:

1242 aa, 132 kDa

Observed MW:

160-185 kDa

Purification Method:

Protein A purification

CloneNo.:

250510A12

## Applications

Tested Applications:

WB, IF/ICC, Indirect ELISA

Species Specificity:

human

## Background Information

Ins receptor substrate 1 (IRS1) was the first cloned and characterized member of the IRS family which are involved in ins receptor (IR) and ins-like growth factor I receptor (IGF-IR) signaling. IRS1 is phosphorylated by ins receptor tyrosine kinase and is involved in various cellular processes including DNA repair fidelity, transcriptional activity, and cell growth can support tumor development and progression. Mutations in this gene are associated with type II diabetes and susceptibility to ins resistance. IRS1 has a predicted molecular weight of 132 kDa, however, as a result of its extensive serine phosphorylation it separates on a SDS gel as a band of approximately 160-185 kDa.

## Storage

Storage:

Store at -80°C.

**The product is shipped with ice packs. Upon receipt, store it immediately at -80°C**

Storage Buffer:

PBS only, pH7.3

For technical support and original validation data for this product please contact:

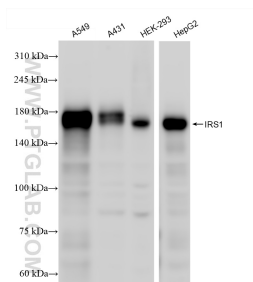
T: 4006900926

E: [Proteintech-CN@ptglab.com](mailto:Proteintech-CN@ptglab.com)

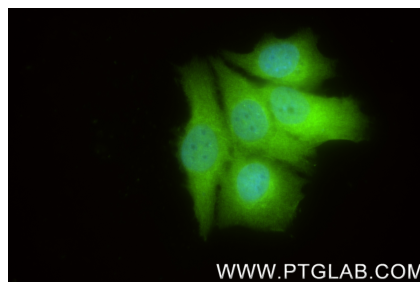
W: [ptgcn.com](http://ptgcn.com)

**This product is exclusively available under Proteintech Group brand and is not available to purchase from any other manufacturer.**

## Selected Validation Data



Various lysates were subjected to SDS PAGE followed by western blot with 82730-10-RR (IRS1 antibody) at dilution of 1:5000 incubated at room temperature for 1.5 hours. This data was developed using the same antibody clone with 82730-10-PBS in a different storage buffer formulation.



Immunofluorescent analysis of (4% PFA) fixed MCF-7 cells using IRS1 antibody (82730-10-RR, Clone: 250510A12 ) at dilution of 1:200 and CoraLite® 488-Conjugated Goat Anti-Rabbit IgG(H+L) (SA00013-2). This data was developed using the same antibody clone with 82730-10-PBS in a different storage buffer formulation.