

# Integrin Beta 1 Recombinant antibody

Catalog Number: 82729-3-RR

## Basic Information

**Catalog Number:**

82729-3-RR

**Concentration:**

1000 ug/ml

**Source:**

Rabbit

**Isotype:**

IgG

**Immunogen Catalog Number:**

AG3078

**GenBank Accession Number:**

BC020057

**GeneID (NCBI):**

3688

**ENSEMBL Gene ID:**

ENSG00000150093

**UNIPROT ID:**

P05556

**Full Name:**integrin, beta 1 (fibronectin receptor,  
beta polypeptide, antigen CD29  
includes MDF2, MSK12)**Calculated MW:**

88 kDa

**Observed MW:**

110-140 kDa

**Purification Method:**

Protein A purification

**CloneNo.:**

1K20

**Recommended Dilutions:**

WB 1:5000-1:50000

IHC 1:500-1:2000

IF-P 1:50-1:500

## Applications

**Tested Applications:**

WB, IHC, IF-P, ELISA

**Species Specificity:**

human

**Note-IHC: suggested antigen retrieval with  
TE buffer pH 9.0; (\*) Alternatively, antigen  
retrieval may be performed with citrate  
buffer pH 6.0**

**Positive Controls:**

**WB:** HT-1080 cells, HeLa cells, A431 cells, U-87 MG  
cells, HCT 116 cells

**IHC:** human placenta tissue,

**IF-P:** Customer Sample customer,

## Background Information

Integrin beta-1 (ITGB1), also named as CD29, is a single chain type I glycoprotein that is expressed in a heterodimeric complex with one of six distinct  $\alpha$  subunits, comprising the very late activation antigen (VLA) subfamily of adhesion receptors. It is one of the essential surface molecules expressed on human MSC from bone marrow and other sources. The  $\beta$  1 subunit is also broadly expressed on lymphocytes and monocytes, weakly expressed on granulocytes, and not expressed on erythrocytes. These receptors are involved in a variety of cell-cell and cell-matrix interactions.

## Storage

**Storage:**

Store at -20°C. Stable for one year after shipment.

**Storage Buffer:**

PBS with 0.02% sodium azide and 50% glycerol pH 7.3.

Aliquoting is unnecessary for -20°C storage

For technical support and original validation data for this product please contact:

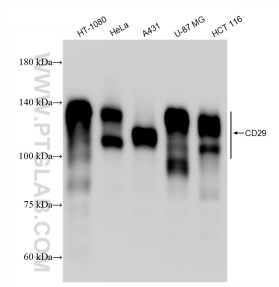
T: 4006900926

E: Proteintech-CN@ptglab.com

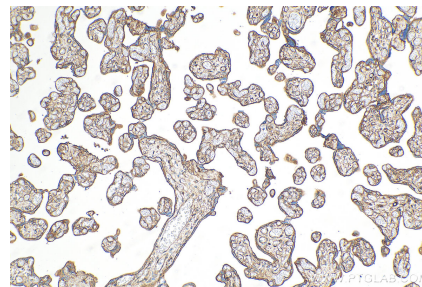
W: ptgcn.com

This product is exclusively available under Proteintech Group brand and is not available to purchase from any other manufacturer.

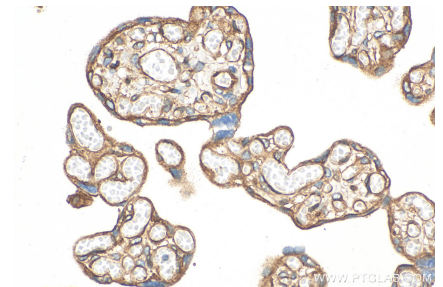
## Selected Validation Data



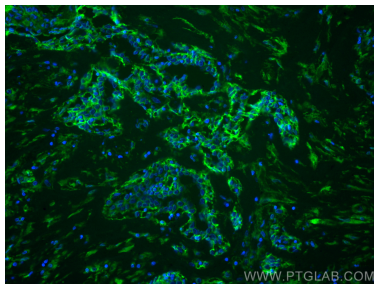
Various lysates were subjected to SDS PAGE followed by western blot with 82729-3-RR (Integrin beta-1 antibody) at dilution of 1:20000 incubated at room temperature for 1.5 hours.



Immunohistochemical analysis of paraffin-embedded human placenta tissue slide using 82729-3-RR (Integrin beta-1 antibody) at dilution of 1:1000 (under 10x lens). Heat mediated antigen retrieval with Tris-EDTA buffer (pH 9.0).



Immunohistochemical analysis of paraffin-embedded human placenta tissue slide using 82729-3-RR (Integrin beta-1 antibody) at dilution of 1:1000 (under 40x lens). Heat mediated antigen retrieval with Tris-EDTA buffer (pH 9.0).



Immunofluorescent analysis of (4% PFA) fixed paraffin-embedded Customer Sample customer using Integrin Beta 1 antibody (82729-3-RR, Clone: 1K20) at dilution of 1:200 and CoraLite@488-Conjugated Goat Anti-Rabbit IgG(H+L) (SA00013-2). Heat mediated antigen retrieval with Tris-EDTA buffer (pH 9.0).