

For Research Use Only

ACTA1-Specific Recombinant antibody, PBS Only

Catalog Number: 82714-5-PBS



Basic Information

Catalog Number:

82714-5-PBS

Size:

1mg/ml

Source:

Rabbit

Isotype:

IgG

GenBank Accession Number:

NM_001100

GeneID (NCBI):

58

UNIPROT ID:

P68133

Full Name:

actin, alpha 1, skeletal muscle

Calculated MW:

42 kDa

Observed MW:

39-42 kDa

Purification Method:

Protein A purification

CloneNo.:

5B15

Applications

Tested Applications:

WB, IF-P, Indirect ELISA

Species Specificity:

human, mouse, rat, pig, chicken

Background Information

Actins are highly conserved proteins that are involved in various types of cell motility and are ubiquitously expressed in all eukaryotic cells. The ACTA1 gene encodes skeletal muscle alpha-actin, the principal actin isoform in adult skeletal muscle, which interacts with a variety of proteins to produce the force for muscle contraction. There is only the N-terminal 8 amino acids difference among the actin family members. This antibody is specific to the ACTA1. It does not cross-react with other actin isoforms.

Storage

Storage:

Store at -80°C.

The product is shipped with ice packs. Upon receipt, store it immediately at -80°C

Storage Buffer:

PBS Only

For technical support and original validation data for this product please contact:

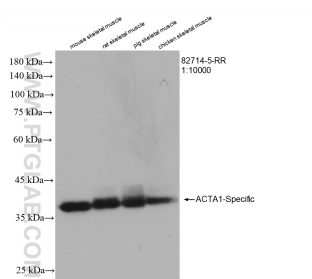
T: 4006900926

E: Proteintech-CN@ptglab.com

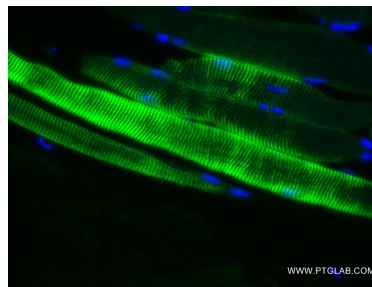
W: ptgcn.com

This product is exclusively available under Proteintech Group brand and is not available to purchase from any other manufacturer.

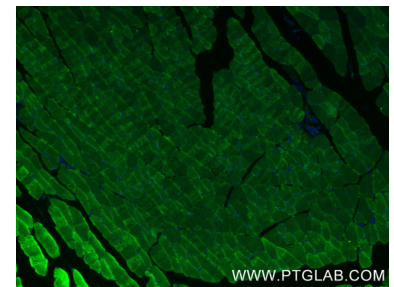
Selected Validation Data



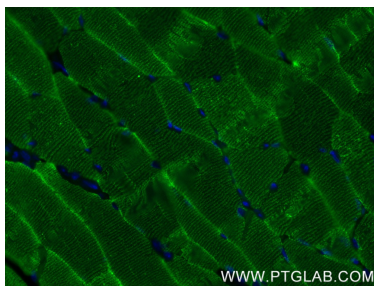
Various lysates were subjected to SDS PAGE followed by western blot with 82714-5-RR (ACTA1-Specific antibody) at dilution of 1:10000 incubated at room temperature for 1.5 hours. This data was developed using the same antibody clone with 82714-5-PBS in a different storage buffer formulation.



Immunofluorescent analysis of (4% PFA) fixed mouse skeletal muscle tissue using ACTA1-Specific antibody (82714-5-RR, Clone: 5B15) at dilution of 1:200 and CoraLite® 488-Conjugated AffiniPure Goat Anti-Rabbit IgG(H+L) (SA00013-2). This data was developed using the same antibody clone with 82714-5-PBS in a different storage buffer formulation.



Immunofluorescent analysis of (4% PFA) fixed paraffin-embedded mouse skeletal muscle tissue using ACTA1-Specific antibody (82714-5-RR, Clone: 5B15) at dilution of 1:200 and CoraLite® 488-Conjugated Goat Anti-Rabbit IgG(H+L) (SA00013-2). Heat mediated antigen retrieval with Tris-EDTA buffer (pH 9.0). This data was developed using the same antibody clone with 82714-5-PBS in a different storage buffer formulation.



Immunofluorescent analysis of (4% PFA) fixed paraffin-embedded mouse skeletal muscle tissue using ACTA1-Specific antibody (82714-5-RR, Clone: 5B15) at dilution of 1:200 and CoraLite® 488-Conjugated Goat Anti-Rabbit IgG(H+L) (SA00013-2). Heat mediated antigen retrieval with Tris-EDTA buffer (pH 9.0). This data was developed using the same antibody clone with 82714-5-PBS in a different storage buffer formulation.