

For Research Use Only

Mouse FGF-21 Recombinant antibody, PBS Only (Detector)

Catalog Number: 82706-6-PBS



Basic Information

Catalog Number:

82706-6-PBS

Size:

1 mg/ml

Source:

Rabbit

Isotype:

IgG

GenBank Accession Number:

NM_020013

GeneID (NCBI):

56636

UNIPROT ID:

Q9JJN1

Full Name:

fibroblast growth factor 21

Calculated MW:

23kd

Purification Method:

Protein A purification

CloneNo.:

240221D10

Applications

Tested Applications:

IF/ICC, Cytometric bead array, Indirect ELISA

Species Specificity:

mouse

Background Information

Storage

Storage:

Store at -80°C.

The product is shipped with ice packs. Upon receipt, store it immediately at -80°C

Storage Buffer:

PBS Only

For technical support and original validation data for this product please contact:

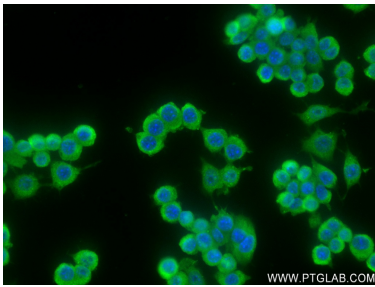
T: 4006900926

E: Proteintech-CN@ptglab.com

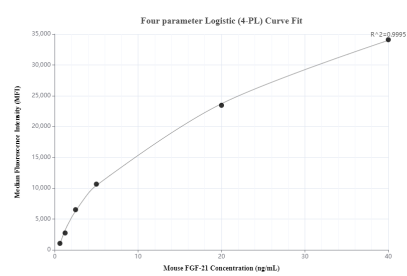
W: ptgcn.com

This product is exclusively available under Proteintech Group brand and is not available to purchase from any other manufacturer.

Selected Validation Data



Immunofluorescent analysis of (4% PFA) fixed LPS and Brefeldin A treated RAW 264.7 cells using FGF-21 antibody (82706-6-RR, Clone: 240221D10) at dilution of 1:250 and CoraLite®488-Conjugated AffiniPure Goat Anti-Rabbit IgG(H+L) (SA00013-2). This data was developed using the same antibody clone with 82706-6-PBS in a different storage buffer formulation.



Cytometric bead array standard curve of MP00366-1, MOUSE FGF-21 Recombinant Matched Antibody Pair, PBS Only. Capture antibody: 82706-5-PBS. Detection antibody: 82706-6-PBS. Standard: Eg0259. Range: 0.625-40ng/mL.