

For Research Use Only

CPT1B Recombinant antibody, PBS Only

Catalog Number: 82701-3-PBS



Basic Information

Catalog Number:

82701-3-PBS

Concentration:

1000 µg/ml

Source:

Rabbit

Isotype:

IgG

Immunogen Catalog Number:

AG17840

GenBank Accession Number:

BC131570

GeneID (NCBI):

1375

UNIPROT ID:

Q92523

Full Name:

carnitine palmitoyltransferase 1B
(muscle)

Calculated MW:

567 aa, 64 kDa

Observed MW:

70-85 kDa

Purification Method:

Protein A purification

CloneNo.:

242881B6

Applications

Tested Applications:

WB, IHC, IF-P, Indirect ELISA

Species Specificity:

mouse

Background Information

Storage

Storage:

Store at -80°C.

The product is shipped with ice packs. Upon receipt, store it immediately at -80°C

Storage Buffer:

PBS only, pH7.3

For technical support and original validation data for this product please contact:

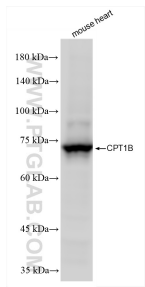
T: 4006900926

E: Proteintech-CN@ptglab.com

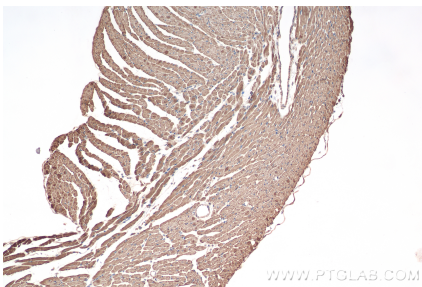
W: ptgcn.com

This product is exclusively available under Proteintech Group brand and is not available to purchase from any other manufacturer.

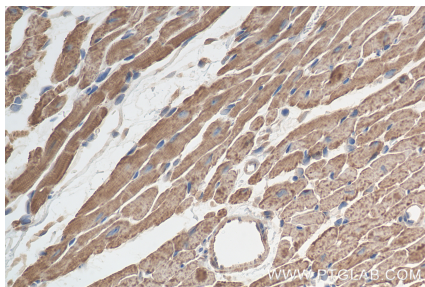
Selected Validation Data



mouse heart tissue were subjected to SDS PAGE followed by western blot with 82701-3-RR (CPT1B antibody) at dilution of 1:40000 incubated at room temperature for 1.5 hours. This data was developed using the same antibody clone with 82701-3-PBS in a different storage buffer formulation.



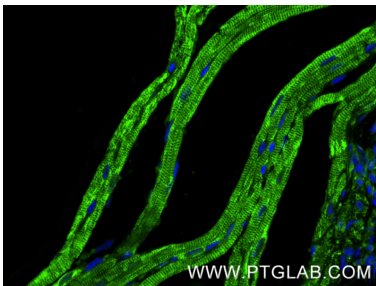
Immunohistochemical analysis of paraffin-embedded mouse heart tissue slide using 82701-3-RR (CPT1B antibody) at dilution of 1:500 (under 10x lens). Heat mediated antigen retrieval with Tris-EDTA buffer (pH 9.0). This data was developed using the same antibody clone with 82701-3-PBS in a different storage buffer formulation.



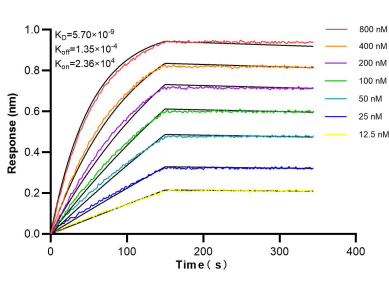
Immunohistochemical analysis of paraffin-embedded mouse heart tissue slide using 82701-3-RR (CPT1B antibody) at dilution of 1:500 (under 40x lens). Heat mediated antigen retrieval with Tris-EDTA buffer (pH 9.0). This data was developed using the same antibody clone with 82701-3-PBS in a different storage buffer formulation.



Immunofluorescent analysis of (4% PFA) fixed paraffin-embedded mouse heart tissue using CPT1B antibody (82701-3-RR, Clone: 242881B6) at dilution of 1:0 and CoraLite®488-Conjugated Goat Anti-Rabbit IgG(H+L) (SA00013-2). Heat mediated antigen retrieval with Tris-EDTA buffer (pH 9.0). This data was developed using the same antibody clone with 82701-3-PBS in a different storage buffer formulation.



Immunofluorescent analysis of (4% PFA) fixed paraffin-embedded mouse heart tissue using CPT1B antibody (82701-3-RR, Clone: 242881B6) at dilution of 1:0 and CoraLite®488-Conjugated Goat Anti-Rabbit IgG(H+L) (SA00013-2). Heat mediated antigen retrieval with Tris-EDTA buffer (pH 9.0). This data was developed using the same antibody clone with 82701-3-PBS in a different storage buffer formulation.



Bi-layer interferometry (BLI) kinetic assays of 82701-3-RR against Human CPT1B were performed. The affinity constant is 5.70 nM.