

For Research Use Only

# Cyclin E1 Recombinant antibody, PBS Only (Detector)

Catalog Number: 82700-9-PBS



## Basic Information

Catalog Number:	82700-9-PBS	GenBank Accession Number:	BC035498	Purification Method:	Protein A purification
Size:	1 mg/ml	GeneID (NCBI):	898	CloneNo.:	240136H5
Source:	Rabbit	UNIPROT ID:	P24864		
Isotype:	IgG	Full Name:	cyclin E1		
Immunogen Catalog Number:	AG2110	Calculated MW:	410 aa, 47 kDa		

## Applications

**Tested Applications:**  
IF/ICC, FC (Intra), Cytometric bead array, Indirect ELISA

**Species Specificity:**  
human

## Background Information

Cyclin E1 (CCNE1) is a member of the highly conserved cyclin family, whose members are characterized by a dramatic periodicity in protein abundance through the cell cycle. CCNE1, an essential cyclin activating Cdk2, regulates the G1-S phase transition of the mammalian cell division cycle. Its timing expression plays a direct role in the initiation of DNA replication, the control of histone biosynthesis, and the centrosome cycle. CCNE1 is associated with disease progression in various malignancies and is associated clinically with poor prognosis. Two bands of Cyclin E1 were expressed in U2OS and MDA-MB-231 cells (PMID:9858585, PMID: 24112607).

## Storage

**Storage:**  
Store at -80°C.  
**The product is shipped with ice packs. Upon receipt, store it immediately at -80°C**

**Storage Buffer:**  
PBS Only

For technical support and original validation data for this product please contact:

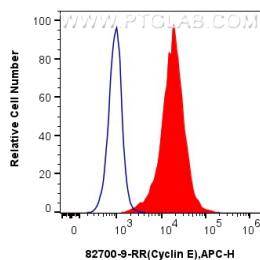
T: 4006900926

E: [Proteintech-CN@ptglab.com](mailto:Proteintech-CN@ptglab.com)

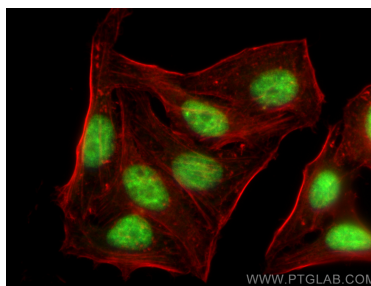
W: [ptgcn.com](http://ptgcn.com)

**This product is exclusively available under Proteintech Group brand and is not available to purchase from any other manufacturer.**

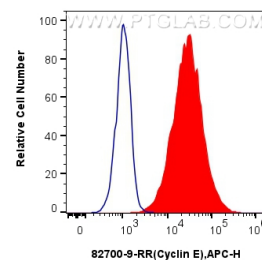
## Selected Validation Data



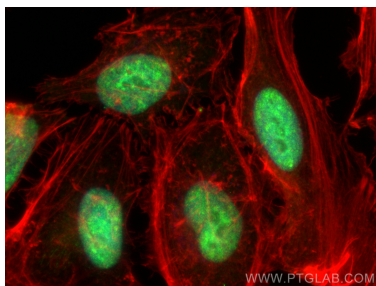
1x10<sup>6</sup> HeLa cells were intracellularly stained with 0.25 ug Cyclin E Recombinant Antibody (82700-9-RR, Clone:240136H5) and APC-Conjugated AffiniPure Goat Anti-Rabbit IgG(H+L)(red), or 0.25 ug Isotype Control (blue). Cells were fixed and permeabilized with Transcription Factor Staining Buffer Kit (PF00011). This data was developed using the same antibody clone with 82700-9-PBS in a different storage buffer formulation.



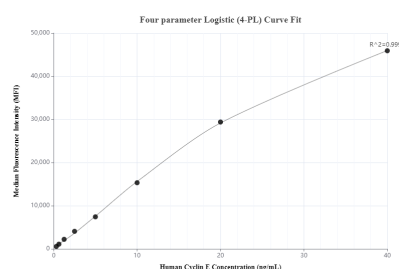
Immunofluorescent analysis of (4% PFA) fixed HepG2 cells using Cyclin E antibody (82700-9-RR, Clone: 240136H5 ) at dilution of 1:200 and Multi-rAb CoraLite ® Plus 488-Goat Anti-Rabbit Recombinant Secondary Antibody (H+L) (RGAR002), CL594-phalloidin (red). This data was developed using the same antibody clone with 82700-9-PBS in a different storage buffer formulation.



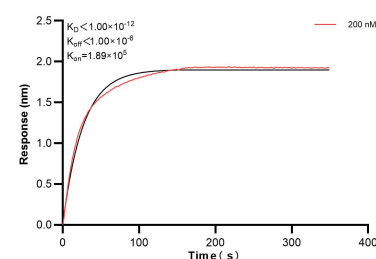
1x10<sup>6</sup> MCF-7 cells were intracellularly stained with 0.25 ug Cyclin E Recombinant Antibody (82700-9-RR, Clone:240136H5) and APC-Conjugated AffiniPure Goat Anti-Rabbit IgG(H+L) (red), or 0.25 ug Isotype Control (blue). Cells were fixed and permeabilized with Transcription Factor Staining Buffer Kit (PF00011). This data was developed using the same antibody clone with 82700-9-PBS in a different storage buffer formulation.



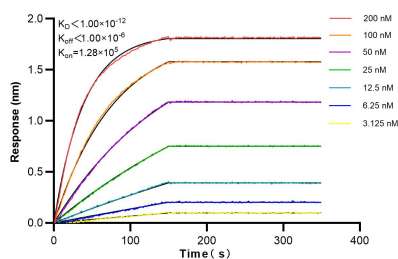
Immunofluorescent analysis of (4% PFA) fixed HeLa cells using Cyclin E antibody (82700-9-RR, Clone: 240136H5 ) at dilution of 1:200 and Multi-rAb CoraLite ® Plus 488-Goat Anti-Rabbit Recombinant Secondary Antibody (H+L) (RGAR002), CL594-phalloidin (red). This data was developed using the same antibody clone with 82700-9-PBS in a different storage buffer formulation.



Cytometric bead array standard curve of MP00361-1, Cyclin E1 Recombinant Matched Antibody Pair, PBS Only. Capture antibody: 82700-7-PBS. Detection antibody: 82700-9-PBS. Standard: Ag2110. Range: 0.313-40 ng/mL



Bi-layer interferometry (BLI) kinetic assay of 82700-9-PBS against Human Cyclin E1 was performed. The affinity constant is below 1 pM.



Bi-layer interferometry (BLI) kinetic assays of 82700-9-RR against Human Cyclin E were performed. The affinity constant is below 1 pM.