

For Research Use Only

Cyclin E1 Recombinant antibody

Catalog Number: 82700-10-RR



Basic Information

Catalog Number:

82700-10-RR

Size:

1000 ug/ml

Source:

Rabbit

Isotype:

IgG

Immunogen Catalog Number:

AG2110

GenBank Accession Number:

BC035498

GeneID (NCBI):

898

UNIPROT ID:

P24864

Full Name:

cyclin E1

Calculated MW:

410 aa, 47 kDa

Observed MW:

45 kDa

Purification Method:

Protein A purification

CloneNo.:

240136D4

Recommended Dilutions:

WB 1:500-1:2000

Applications

Tested Applications:

WB, FC (Intra), ELISA

Species Specificity:

human, rat

Positive Controls:

WB : HT-29 cells, MCF-7 cells, rat heart tissue, HuH-7 cells

Background Information

Cyclin E1 (CCNE1) is a member of the highly conserved cyclin family, whose members are characterized by a dramatic periodicity in protein abundance through the cell cycle. CCNE1, an essential cyclin activating Cdk2, regulates the G1-S phase transition of the mammalian cell division cycle. Its timing expression plays a direct role in the initiation of DNA replication, the control of histone biosynthesis, and the centrosome cycle. CCNE1 is associated with disease progression in various malignancies and is associated clinically with poor prognosis. Two bands of Cyclin E1 were expressed in U2OS and MDA-MB-231 cells (PMID:9858585, PMID: 24112607).

Storage

Storage:

Store at -20°C. Stable for one year after shipment.

Storage Buffer:

PBS with 0.02% sodium azide and 50% glycerol pH 7.3.

Aliquoting is unnecessary for -20°C storage

For technical support and original validation data for this product please contact:

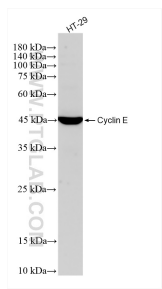
T: 4006900926

E: Proteintech-CN@ptglab.com

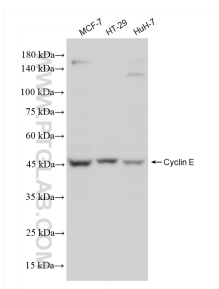
W: ptgcn.com

This product is exclusively available under Proteintech Group brand and is not available to purchase from any other manufacturer.

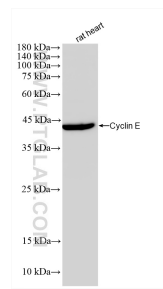
Selected Validation Data



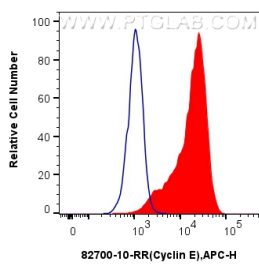
HT-29 cells were subjected to SDS PAGE followed by western blot with 82700-10-RR (Cyclin E antibody) at dilution of 1:1000 incubated at room temperature for 1.5 hours.



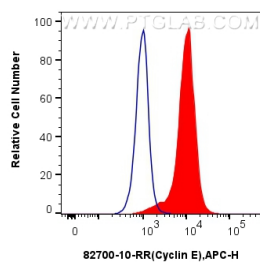
Various lysates were subjected to SDS PAGE followed by western blot with 82700-10-RR (Cyclin E antibody) at dilution of 1:1000 incubated at room temperature for 1.5 hours.



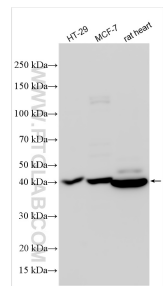
rat heart tissue were subjected to SDS PAGE followed by western blot with 82700-10-RR (Cyclin E antibody) at dilution of 1:1000 incubated at room temperature for 1.5 hours.



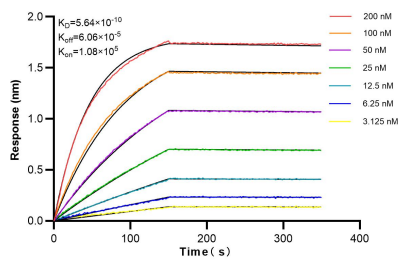
1x10⁶ MCF-7 cells were intracellularly stained with 0.25 ug Cyclin E Recombinant Antibody (82700-10-RR, Clone:240136D4) and APC-Conjugated AffiniPure Goat Anti-Rabbit IgG(H+L) (red), or 0.25 ug Isotype Control (blue). Cells were fixed and permeabilized with Transcription Factor Staining Buffer Kit (PF00011).



1x10⁶ HeLa cells were intracellularly stained with 0.25 ug Cyclin E Recombinant Antibody (82700-10-RR, Clone:240136D4) and APC-Conjugated AffiniPure Goat Anti-Rabbit IgG(H+L)(red), or 0.25 ug Isotype Control (blue). Cells were fixed and permeabilized with Transcription Factor Staining Buffer Kit (PF00011).



Various lysates were subjected to SDS PAGE followed by western blot with 82700-10-RR (Cyclin E antibody) at dilution of 1:300 incubated at room temperature for 1.5 hours.



Biolayer interferometry (BLI) kinetic assays of 82700-10-RR against Human Cyclin E were performed. The affinity constant is 0.564 nM.