

For Research Use Only

NR1D1 Recombinant monoclonal antibody

Catalog Number: 82699-7-RR



Basic Information

Catalog Number: 82699-7-RR	GenBank Accession Number: BC056148	Purification Method: Protein A purification
Source: Rabbit	GeneID (NCBI): 9572	CloneNo.: 251520G1
Isotype: IgG	UNIPROT ID: P20393	Recommended Dilutions: WB: 1:1000-1:4000
Immunogen Catalog Number: AG5964	Full Name: nuclear receptor subfamily 1, group D, member 1	
	Calculated MW: 67 kDa	
	Observed MW: 68 kDa	

Applications

Tested Applications: WB, ELISA	Positive Controls:
Species Specificity: human, mouse	WB : HeLa cells, HepG2 cells, Jurkat cells, A549 cells, NIH/3T3 cells, Mouse skeletal muscle tissue

Background Information

NR1D1, also named EAR1, THRAL, ear-1, and hRev, contains one nuclear receptor DNA-binding domain and belongs to the nuclear hormone receptor family, NR1 subfamily. This protein functions as a constitutive transcriptional repressor. It is a possible receptor for triiodothyronine. BMAL1-CLOCK activates Rev-erba itself and thereby represents the link between the positive and negative loops of the circadian clock. This is a rabbit polyclonal antibody raised against the N terminus of human NR1D1.

Storage

Storage:
Store at -20°C. Stable for one year after shipment.
Storage Buffer:
PBS with 0.02% sodium azide and 50% glycerol, pH7.3
Aliquoting is unnecessary for -20°C storage

For technical support and original validation data for this product please contact:

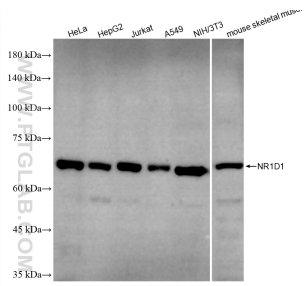
T: 4006900926

E: Proteintech-CN@ptglab.com

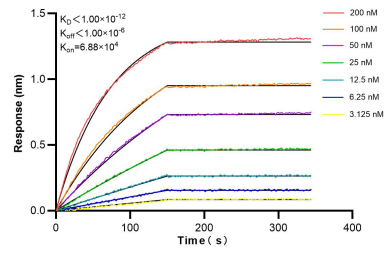
W: ptgcn.com

This product is exclusively available under Proteintech Group brand and is not available to purchase from any other manufacturer.

Selected Validation Data



Various lysates were subjected to SDS PAGE followed by western blot with 82699-7-RR (NR1D1 antibody) at dilution of 1:2000 incubated at room temperature for 1.5 hours.



Biolayer interferometry (BLI) kinetic assays of 82699-7-RR against Human NR1D1 were performed. The affinity constant is below 1 pM.