

For Research Use Only

# MCL1 Recombinant antibody, PBS Only

Catalog Number: 82695-4-PBS



## Basic Information

Catalog Number: 82695-4-PBS	GenBank Accession Number: BC107735	Purification Method: Protein A purification
Size: 1mg/ml	GeneID (NCBI): 4170	CloneNo.: 5P13
Source: Rabbit	UNIPROT ID: Q07820	
Isotype: IgG	Full Name: myeloid cell leukemia sequence 1 (BCL2-related)	
Immunogen Catalog Number: AG10397	Calculated MW: 350 aa, 37 kDa	
	Observed MW: 40 kDa	

## Applications

**Tested Applications:**  
WB, IHC, IF/ICC, FC (Intra), Indirect ELISA

**Species Specificity:**  
human

## Background Information

MCL-1 is an anti-apoptotic member of the Bcl-2 family originally isolated from the ML-1 human myeloid leukemia cell line. Similar to BCL2 and BCL2L1, MCL1 can interact with BAX and/or BAK1 to inhibit mitochondria-mediated apoptosis. Mcl-1 is critical for the proliferation and survival of myeloma cells in vitro, and overexpression of Mcl-1 protein in myeloma cells is associated with relapse and short event-free survival in multiple myeloma patients. Recent studies show that MCL-1 is upregulated in numerous haematological and solid tumor malignancies. Therefore, MCL-1 has been suggested as a potential new therapeutic target. MCL-1 can be alternatively spliced into a long form (MCL-1L, 40 kDa) or a short form (MCL-1S, 30 kDa). (PMID: 15467463, PMID: 15147382)

## Storage

**Storage:**  
Store at -80°C.

**The product is shipped with ice packs. Upon receipt, store it immediately at -80°C**

**Storage Buffer:**  
PBS Only

For technical support and original validation data for this product please contact:

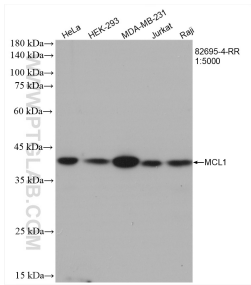
T: 4006900926

E: [Proteintech-CN@ptglab.com](mailto:Proteintech-CN@ptglab.com)

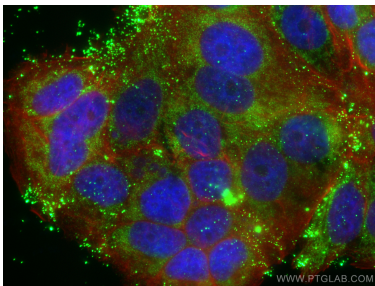
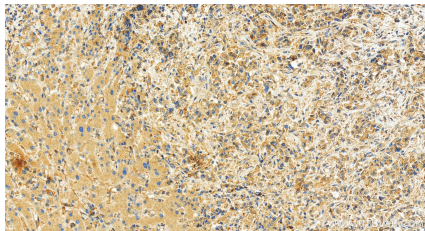
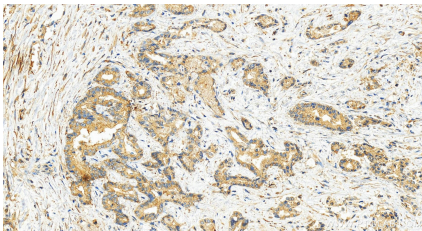
W: [ptgcn.com](http://ptgcn.com)

**This product is exclusively available under Proteintech Group brand and is not available to purchase from any other manufacturer.**

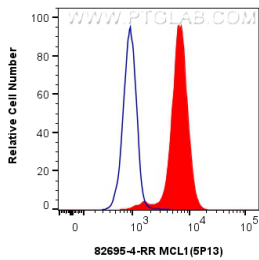
Selected Validation Data



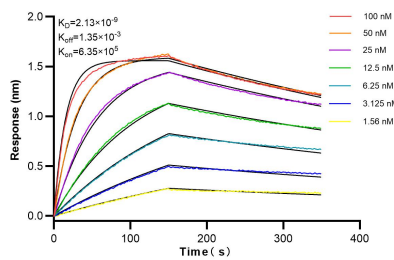
Various lysates were subjected to SDS PAGE followed by western blot with 82695-4-RR (MCL1 antibody) at dilution of 1:5000 incubated at room temperature for 1.5 hours. This data was developed using the same antibody clone with 82695-4-PBS in a different storage buffer formulation.



Immunofluorescent analysis of (4% PFA) fixed MCF-7 cells using MCL1 antibody (82695-4-RR, Clone: 5P13) at dilution of 1:1000 and CoraLite®488-Conjugated AffiniPure Goat Anti-Rabbit IgG(H+L) (SA00013-2), CL594-Phalloidin (red). This data was developed using the same antibody clone with 82695-4-PBS in a different storage buffer formulation.



1x10<sup>6</sup> Ramos cells were intracellularly stained with 0.25 ug MCL1 Recombinant antibody (82695-4-RR, Clone:5P13) and CoraLite®488-Conjugated Goat Anti-Rabbit IgG(H+L) (SA00013-2)(red), or 0.25 ug Rabbit IgG Isotype Control Recombinant Antibody (98136-1-RR, Clone: 240953C9) (blue). Cells were fixed with 4% PFA and permeabilized with Flow Cytometry Perm Buffer (PF00011-C). This data was developed using the same antibody clone with 82695-4-PBS in a



Biolayer interferometry (BLI) kinetic assays of 82695-4-RR against Human MCL1 were performed. The affinity constant is 2.13 nM.