

# MCL1 Recombinant antibody

Catalog Number: 82695-2-RR

## Basic Information

**Catalog Number:**

82695-2-RR

**Size:**

1000 ug/ml

**Source:**

Rabbit

**Isotype:**

IgG

**Immunogen Catalog Number:**

AG10397

**GenBank Accession Number:**

BC107735

**GeneID (NCBI):**

4170

**UNIPROT ID:**

Q07820

**Full Name:**

myeloid cell leukemia sequence 1  
(BCL2-related)

**Calculated MW:**

350 aa, 37 kDa

**Observed MW:**

40 kDa

**Purification Method:**

Protein A purification

**CloneNo.:**

1C7

**Recommended Dilutions:**

WB 1:2000-1:10000

IHC 1:50-1:500

IF/ICC 1:50-1:500

## Applications

**Tested Applications:**

WB, IHC, IF/ICC, ELISA

**Species Specificity:**

human, mouse, rat

**Note-IHC: suggested antigen retrieval with  
TE buffer pH 9.0; (\*) Alternatively, antigen  
retrieval may be performed with citrate  
buffer pH 6.0**

**Positive Controls:**

**WB :** HeLa cells, HEK-293 cells, MCF-7 cells, Jurkat cells, Raji cells, C2C12 cells, C6 cells

**IHC :** human ovarian cancer, human intrahepatic cholangiocarcinoma tissue

**IF/ICC :** MCF-7 cells,

## Background Information

MCL-1 is an anti-apoptotic member of the Bcl-2 family originally isolated from the ML-1 human myeloid leukemia cell line. Similar to BCL2 and BCL2L1, MCL1 can interact with BAX and/or BAK1 to inhibit mitochondria-mediated apoptosis. Mcl-1 is critical for the proliferation and survival of myeloma cells in vitro, and overexpression of Mcl-1 protein in myeloma cells is associated with relapse and short event-free survival in multiple myeloma patients. Recent studies show that MCL-1 is upregulated in numerous haematological and solid tumour malignancies. Therefore, MCL-1 has been suggested as a potential new therapeutic target. MCL-1 can be alternatively spliced into a long form (MCL-1L, 40 kDa) or a short form (MCL-1S, 30 kDa). (PMID: 15467463, PMID: 15147382)

## Storage

**Storage:**

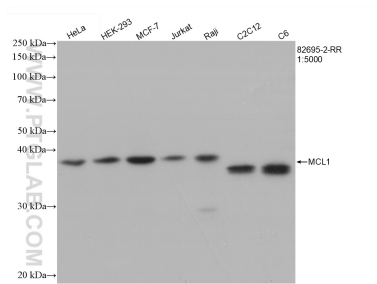
Store at -20°C. Stable for one year after shipment.

**Storage Buffer:**

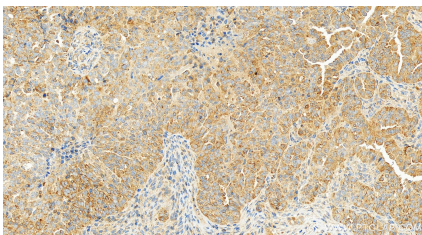
PBS with 0.02% sodium azide and 50% glycerol pH 7.3.

Aliquoting is unnecessary for -20°C storage

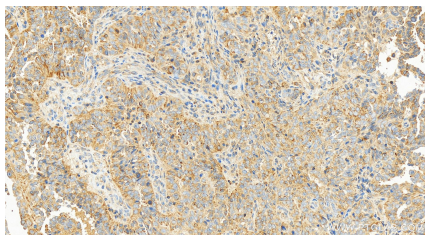
## Selected Validation Data



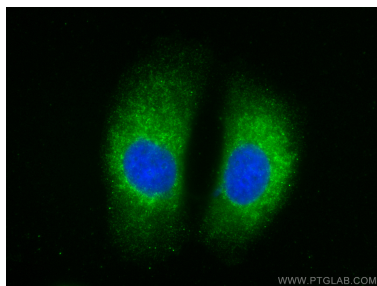
Various lysates were subjected to SDS PAGE followed by western blot with 82695-2-RR (MCL1 antibody) at dilution of 1:5000 incubated at room temperature for 1.5 hours.



Immunohistochemical analysis of paraffin-embedded human ovarian cancer slide using 82695-2-RR (MCL1 antibody) at dilution of 1:200 (under 20x lens). Heat mediated antigen retrieval with Tris-EDTA buffer (pH 9.0).



Immunohistochemical analysis of paraffin-embedded human ovarian cancer slide using 82695-2-RR (MCL1 antibody) at dilution of 1:200 (under 20x lens). Heat mediated antigen retrieval with Tris-EDTA buffer (pH 9.0).



Immunofluorescent analysis of (-20°C Methanol) fixed MCF-7 cells using MCL1 antibody (82695-2-RR, Clone: 1C7 ) at dilution of 1:200 and CoraLite®488-Conjugated AffiniPure Goat Anti-Rabbit IgG(H+L).