

For Research Use Only

RPL14 Recombinant antibody

Catalog Number: 82688-1-RR



Basic Information

Catalog Number:

82688-1-RR

Concentration:

1000 ug/ml

Source:

Rabbit

Isotype:

IgG

Immunogen Catalog Number:

AG6976

GenBank Accession Number:

BC000606

GeneID (NCBI):

9045

UNIPROT ID:

P50914

Full Name:

ribosomal protein L14

Calculated MW:

23 kDa

Observed MW:

23-27 kDa

Purification Method:

Protein A purification

CloneNo.:

2K22

Recommended Dilutions:

WB 1:5000-1:50000

IF/ICC 1:500-1:2000

Applications

Tested Applications:

WB, IF/ICC, ELISA

Species Specificity:

human

Positive Controls:

WB : HepG2 cells, MCF-7 cells, A431 cells, MDA-MB-453s cells, Jurkat cells

IF/ICC : HepG2 cells,

Background Information

RPL14 is a component of the large ribosomal subunit. The protein belongs to the L14E family of ribosomal proteins. It contains a basic region-leucine zipper (bZIP)-like domain.

Storage

Storage:

Store at -20°C. Stable for one year after shipment.

Storage Buffer:

PBS with 0.02% sodium azide and 50% glycerol pH 7.3.

Aliquoting is unnecessary for -20°C storage

For technical support and original validation data for this product please contact:

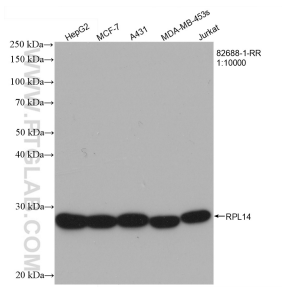
T: 4006900926

E: Proteintech-CN@ptglab.com

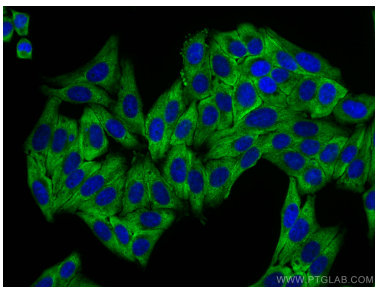
W: ptgcn.com

This product is exclusively available under Proteintech Group brand and is not available to purchase from any other manufacturer.

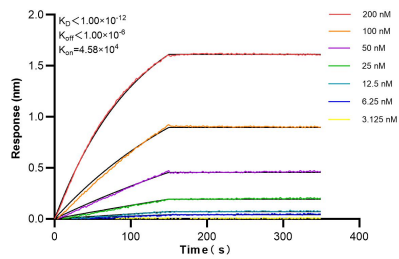
Selected Validation Data



Various lysates were subjected to SDS PAGE followed by western blot with 82688-1-RR (RPL14 antibody) at dilution of 1:10000 incubated at room temperature for 1.5 hours.



Immunofluorescent analysis of (4% PFA) fixed HepG2 cells using RPL14 antibody (82688-1-RR, Clone: 2K22) at dilution of 1:1000 and CoraLite®488-Conjugated AffiniPure Goat Anti-Rabbit IgG(H+L).



Biolayer interferometry (BLI) kinetic assays of 82688-1-RR against Human RPL14 were performed. The affinity constant is below 1 pM.