

For Research Use Only

# IRE1; ERN1 Recombinant antibody, PBS Only (Detector)

Catalog Number: 82687-3-PBS



## Basic Information

Catalog Number:

82687-3-PBS

Concentration:

1 mg/ml

Source:

Rabbit

Isotype:

IgG

Immunogen Catalog Number:

AG25580

GenBank Accession Number:

BC130405

GeneID (NCBI):

2081

UNIPROT ID:

O75460

Full Name:

endoplasmic reticulum to nucleus  
signaling 1

Calculated MW:

977 aa, 110 kDa

Purification Method:

Protein A purification

CloneNo.:

250145G5

## Applications

Tested Applications:

Sandwich ELISA, Indirect ELISA, Sample test

Species Specificity:

human

## Background Information

### Storage

Storage:

Store at -80°C.

**The product is shipped with ice packs. Upon receipt, store it immediately at -80°C**

Storage Buffer:

PBS only, pH7.3

For technical support and original validation data for this product please contact:

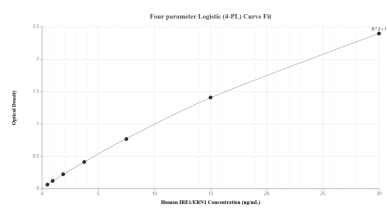
T: 4006900926

E: [Proteintech-CN@ptglab.com](mailto:Proteintech-CN@ptglab.com)

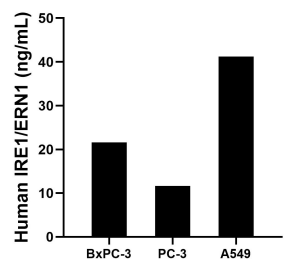
W: [ptgcn.com](http://ptgcn.com)

**This product is exclusively available under Proteintech Group brand and is not available to purchase from any other manufacturer.**

## Selected Validation Data



Sandwich ELISA standard curve of MP02267-1, Human IRE1/ERN1 Recombinant Matched Antibody Pair - PBS only. 82687-4-PBS was coated to a plate as the capture antibody and incubated with serial dilutions of standard Ag25580. 82687-3-PBS was HRP conjugated as the detection antibody. Range: 0.469-30 ng/mL.



The mean IRE1/ERN1 concentration was determined to be 21.57 ng/mL in BxPC-3 cell extract based on a 2.00 mg/mL extract load, 11.61 ng/mL in PC-3 cell extract based on a 1.60 mg/mL extract load and 41.21 ng/mL in A549 cell extract based on a 2.40 mg/mL extract load.