

For Research Use Only

# SREBF1 Recombinant antibody

Catalog Number: 82684-3-RR

Featured Product



## Basic Information

Catalog Number:

82684-3-RR

Size:

800 ug/ml

Source:

Rabbit

Isotype:

IgG

Immunogen Catalog Number:

AG5219

GenBank Accession Number:

BC063281

GeneID (NCBI):

6720

UNIPROT ID:

P36956

Full Name:

sterol regulatory element binding  
transcription factor 1

Calculated MW:

1177 aa, 125 kDa

Observed MW:

68 kDa, 125 kDa

Purification Method:

Protein A purification

CloneNo.:

1P4

Recommended Dilutions:

WB 1:1000-1:8000

## Applications

Tested Applications:

WB, FC (Intra), ELISA

Species Specificity:

human

Positive Controls:

WB : HeLa cells, MCF-7 cells, A549 cells, K-562 cells

## Background Information

SREBF1, also named as BHLHD1 and SREBP1, contains one basic helix-loop-helix (bHLH) domain and belongs to the SREBP family. It is a transcriptional activator required for lipid homeostasis. The SREBPs are synthesized as precursors anchored to endoplasmic reticulum (ER) membranes and complexed with SCAP. When the cellular cholesterol level is low, SREBP-SCAP complexes move to the Golgi apparatus, where SREBPs undergo a two-step proteolytic processing, leading to the release of the mature form, an N-terminal fragment, i.e., basic helix-loop-helix leucine zipper transcription factor. These factors enter the nucleus where they bind to sterol regulatory elements (SRE) in the promoter regions of a number of genes whose products mediate the synthesis of cholesterol and fatty acids. [PMID: 21698267].

## Storage

Storage:

Store at -20°C. Stable for one year after shipment.

Storage Buffer:

PBS with 0.02% sodium azide and 50% glycerol pH 7.3.

Aliquoting is unnecessary for -20°C storage

For technical support and original validation data for this product please contact:

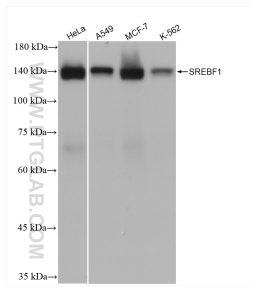
T: 4006900926

E: Proteintech-CN@ptglab.com

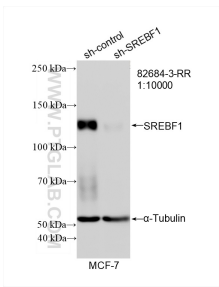
W: ptgcn.com

This product is exclusively available under Proteintech Group brand and is not available to purchase from any other manufacturer.

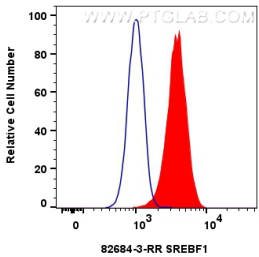
## Selected Validation Data



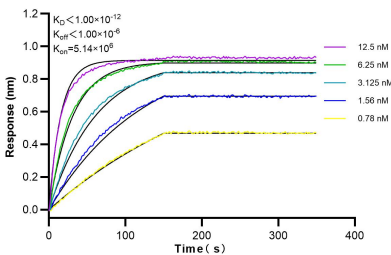
HeLa cells were subjected to SDS PAGE followed by western blot with 82684-3-RR (SREBF1 antibody) at dilution of 1:4000 incubated at room temperature for 1.5 hours.



WB result of SREBF1 antibody (82684-3-RR; 1:10000; incubated at room temperature for 1.5 hours) with sh-Control and sh-SREBF1 transfected MCF-7 cells.



1x10<sup>6</sup> HepG2 cells were intracellularly stained with 0.25  $\mu$ g SREBF1 Recombinant antibody (82684-3-RR, Clone:1P4) and CoraLite<sup>®</sup>488-Conjugated AffiniPure Goat Anti-Rabbit IgG(H+L) (SA00013-2) (red), or 0.25  $\mu$ g Isotype Control (blue). Cells were fixed with 4% PFA and permeabilized with Flow Cytometry Perm Buffer (PF00011-C).



Biolayer interferometry (BLI) kinetic assays of 82684-3-RR against Human SREBF1 were performed. The affinity constant is below 1 pM.