

For Research Use Only

Cyclin D1 Recombinant antibody, PBS Only (Detector)

Catalog Number: 82681-1-PBS



Basic Information

Catalog Number: 82681-1-PBS	GenBank Accession Number: BC000076	Purification Method: Protein A purification
Concentration: 1mg/ml	GeneID (NCBI): 595	CloneNo.: 6B10
Source: Rabbit	UNIPROT ID: P24385	
Isotype: IgG	Full Name: cyclin D1	
Immunogen Catalog Number: AG25384	Calculated MW: 295 aa, 34 kDa	
	Observed MW: 34 kDa	

Applications

Tested Applications:
WB, IHC, IF/ICC, Sandwich ELISA, Indirect ELISA,
Sample test

Species Specificity:
human, mouse, rat

Background Information

CCND1 (cyclin D1), also known as PRAD1 or BCL1, belongs to the highly conserved cyclin family, whose members are characterized by a dramatic periodicity in protein abundance throughout the cell cycle. CCND1 forms a complex with and functions as a regulatory subunit of CDK4 or CDK6, whose activity is required for cell cycle G1/S transition. The CCND1 gene, located on 11q13 has been reported to be overexpressed in mantle cell lymphoma (MCL) due to the chromosomal translocation. CCND1 has been shown to interact with tumor suppressor protein Rb and the expression of this gene is regulated positively by Rb. Over-expression of CCND1 is known to correlate with the early onset of cancer and risk of tumor progression and metastasis.

Storage

Storage:
Store at -80°C.
The product is shipped with ice packs. Upon receipt, store it immediately at -80°C

Storage Buffer:
PBS Only

For technical support and original validation data for this product please contact:

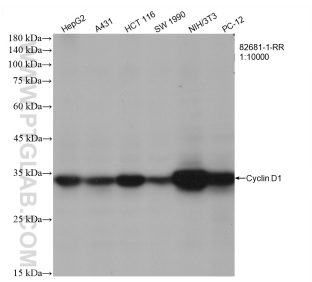
T: 4006900926

E: Proteintech-CN@ptglab.com

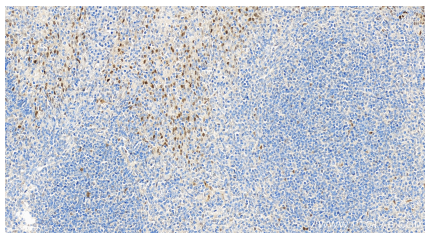
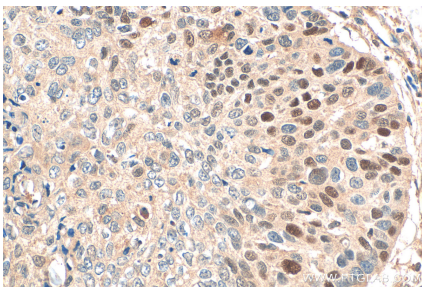
W: ptgcn.com

This product is exclusively available under Proteintech Group brand and is not available to purchase from any other manufacturer.

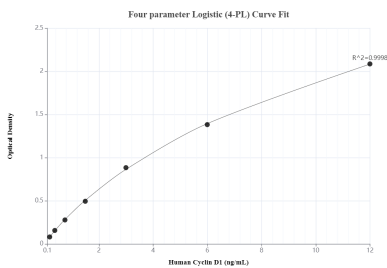
Selected Validation Data



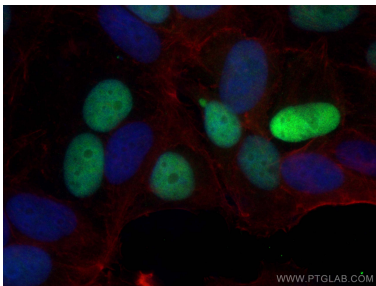
Various lysates were subjected to SDS PAGE followed by western blot with 82681-1-RR (Cyclin D1 antibody) at dilution of 1:10000 incubated at room temperature for 1.5 hours. This data was developed using the same antibody clone with 82681-1-PBS in a different storage buffer formulation.



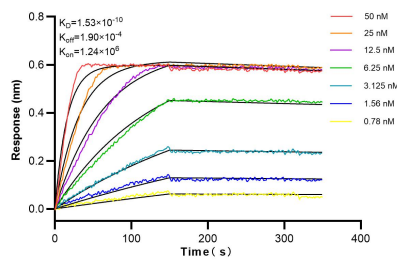
Immunohistochemical analysis of paraffin-embedded human tonsillitis tissue slide using 82681-1-RR (Cyclin D1 antibody) at dilution of 1:1000 (under 20x lens). Heat mediated antigen retrieval with Tris-EDTA buffer (pH 9.0). This data was developed using the same antibody clone with 82681-1-PBS in a different storage buffer formulation.



Sandwich ELISA standard curve of MP80003-1, Cyclin D1 Hybrid Matched Antibody Pair, PBS Only. Capture antibody: 68790-1-PBS. Detection antibody: 82681-1-PBS. Standard: Ag25384. Range: 0.188-12 ng/mL.



Immunofluorescent analysis of (4% PFA) fixed MCF-7 cells using Cyclin D1 antibody (82681-1-RR, Clone: 6B10) at dilution of 1:2000 and CoraLite®488-Conjugated AffiniPure Goat Anti-Rabbit IgG(H+L) (SA00013-2), CL594-phalloidin (red). This data was developed using the same antibody clone with 82681-1-PBS in a different storage buffer formulation.



Bilayer interferometry (BLI) kinetic assays of 82681-1-RR against Human Cyclin D1 were performed. The affinity constant is 0.153 nM.