

For Research Use Only

P21 Recombinant antibody, PBS Only

Catalog Number: 82669-2-PBS



Basic Information

Catalog Number:

82669-2-PBS

Concentration:

1mg/ml

Source:

Rabbit

Isotype:

IgG

Immunogen Catalog Number:

AG0368

GenBank Accession Number:

BC000275

GeneID (NCBI):

1026

UNIPROT ID:

P38936

Full Name:

cyclin-dependent kinase inhibitor 1A
(p21, Cip1)

Calculated MW:

18 kDa

Observed MW:

21 kDa

Purification Method:

Protein A purification

CloneNo.:

3N14

Applications

Tested Applications:

WB, IF/ICC, IP, Indirect ELISA

Species Specificity:

human

Background Information

CDKN1A (p21, CIP1, WAF1) is a cyclin-dependent kinase inhibitor. CDKN1A binds to and inhibits the activity of cyclin-CDK2 or -CDK4 complexes, and thus functions as a regulator of cell cycle progression at the G1 phase. The expression of CDKN1A is induced by wild-type but not mutant p53 protein, through which CDKN1A mediates the p53-dependent cell cycle G1 phase arrest in response to a variety of stress stimuli. CDKN1A can interact with proliferating cell nuclear antigen (PCNA), and plays a regulatory role in S phase DNA replication and DNA damage repair. CDKN1A was reported to be specifically cleaved by CASP3-like caspases, which thus leads to a dramatic activation of CDK2, and may be instrumental in the execution of apoptosis following caspase activation. Two alternatively spliced variants, which encode an identical protein, have been reported.

Storage

Storage:

Store at -80°C.

The product is shipped with ice packs. Upon receipt, store it immediately at -80°C

Storage Buffer:

PBS only

For technical support and original validation data for this product please contact:

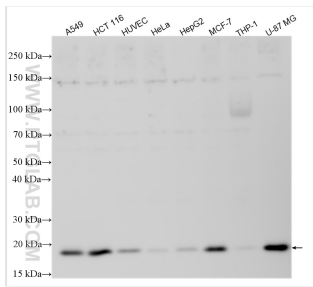
T: 4006900926

E: Proteintech-CN@ptglab.com

W: ptgcn.com

This product is exclusively available under Proteintech Group brand and is not available to purchase from any other manufacturer.

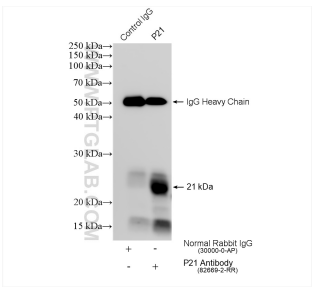
Selected Validation Data



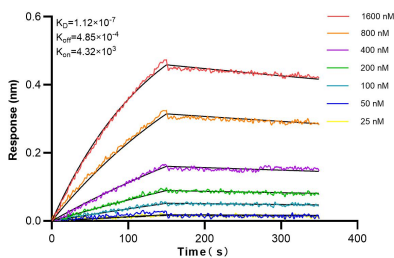
Various lysates were subjected to SDS PAGE followed by western blot with 82669-2-RR (P21 antibody) at dilution of 1:1500 incubated at room temperature for 1.5 hours. This data was developed using the same antibody clone with 82669-2-PBS in a different storage buffer formulation.



Immunofluorescent analysis of (4% PFA) fixed MCF-7 cells using P21 antibody (82669-2-RR, Clone: 3N14) at dilution of 1:2000 and CoraLite® 488-Conjugated AffiniPure Goat Anti-Rabbit IgG(H+L), CL594-Phalloidin (red). This data was developed using the same antibody clone with 82669-2-PBS in a different storage buffer formulation.



IP result of anti-P21 (IP:82669-2-RR, 4ug; Detection:82669-2-RR 1:800) with MCF-7 cells lysate 760 ug. This data was developed using the same antibody clone with 82669-2-PBS in a different storage buffer formulation.



Bioluminescence resonance transfer (BLI) kinetic assays of 82669-2-RR against Human P21 were performed. The affinity constant is 112 nM.