

For Research Use Only

# SPHK1 Recombinant antibody

Catalog Number: 82609-1-RR



## Basic Information

Catalog Number:

82609-1-RR

Size:

500 ug/ml

Source:

Rabbit

Isotype:

IgG

Immunogen Catalog Number:

AG1051

GenBank Accession Number:

BC008040

GeneID (NCBI):

8877

UNIPROT ID:

Q9NYA1

Full Name:

sphingosine kinase 1

Calculated MW:

43 kDa

Observed MW:

42 kDa

Purification Method:

Protein A purification

CloneNo.:

2K12

Recommended Dilutions:

WB 1:1000-1:5000

IF/ICC 1:200-1:800

## Applications

Tested Applications:

WB, IF/ICC, ELISA

Species Specificity:

human, mouse

Positive Controls:

WB : HepG2 cells, L02 cells, MCF-7 cells, NIH/3T3 cells

IF/ICC : HepG2 cells,

## Background Information

SPHK(Sphingosine kinase 1) is also named as SPHK, SPK. It catalyzes the phosphorylation of sphingosine to form sphingosine 1-phosphate (SPP), a lipid mediator with both intra- and extracellular functions and is precariously perched at the balance point between pro-growth and pro-death signalling in the cell. Endogenous SPHK1 purified from placenta has identical enzymatic characteristics, suggesting posttranslational modification does not effect functional properties (PMID:10947957). It has 2 isoforms produced by alternative splicing and can form the oligomeric structure (PMID:22335554).

## Storage

Storage:

Store at -20°C. Stable for one year after shipment.

Storage Buffer:

PBS with 0.02% sodium azide and 50% glycerol pH 7.3.

Aliquoting is unnecessary for -20°C storage

For technical support and original validation data for this product please contact:

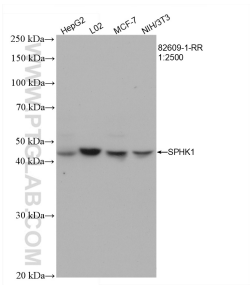
T: 4006900926

E: Proteintech-CN@ptglab.com

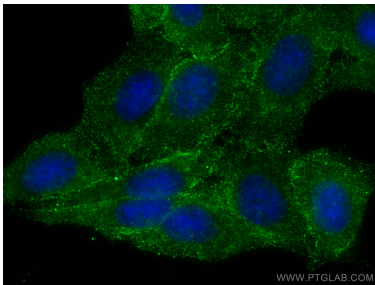
W: ptgcn.com

This product is exclusively available under Proteintech Group brand and is not available to purchase from any other manufacturer.

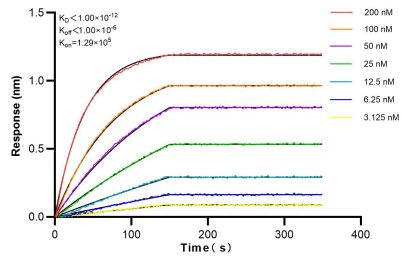
Selected Validation Data



Various lysates were subjected to SDS PAGE followed by western blot with 82609-1-RR (SPHK1 antibody) at dilution of 1:2500 incubated at room temperature for 1.5 hours.



Immunofluorescent analysis of (-20°C Ethanol) fixed HepG2 cells using SPHK1 antibody (82609-1-RR, Clone: 2K12 ) at dilution of 1:400 and CoraLite®488-Conjugated AffiniPure Goat Anti-Rabbit IgG(H+L).



Biolayer interferometry (BLI) kinetic assays of 82609-1-RR against Human SPHK1 were performed. The affinity constant is below 1 pM.