

# Cytokeratin 5 Recombinant antibody

Catalog Number: 82548-7-RR

## Basic Information

<b>Catalog Number:</b> 82548-7-RR	<b>GenBank Accession Number:</b> BC024292	<b>Purification Method:</b> Protein A purification
<b>Size:</b> 817 µg/ml	<b>GeneID (NCBI):</b> 3852	<b>CloneNo.:</b> 4N17
<b>Source:</b> Rabbit	<b>UNIPROT ID:</b> P13647	<b>Recommended Dilutions:</b> IHC 1:500-1:2000 IF/ICC 1:200-1:800
<b>Isotype:</b> IgG	<b>Full Name:</b> keratin 5	
<b>Immunogen Catalog Number:</b> AG24184	<b>Calculated MW:</b> 590 aa, 62 kDa	

## Applications

<b>Tested Applications:</b> IF/ICC, IHC, ELISA	<b>Positive Controls:</b>
<b>Species Specificity:</b> Human	<b>IHC :</b> human lung cancer tissue, human Mesothelioma tissue
<b>Note-IHC:</b> suggested antigen retrieval with <b>TE buffer pH 9.0; (*) Alternatively, antigen retrieval may be performed with citrate buffer pH 6.0</b>	<b>IF/ICC :</b> A431 cells, HeLa cells

## Background Information

Keratins are a large family of proteins that form the intermediate filament cytoskeleton of epithelial cells. Keratin expression is highly regulated, tissue specific, and varies according to cell-state. Type I keratins consist of acidic, low molecular weight proteins with MW ranging from 40 kDa (KRT19) to 64 kDa (KRT9). Type 2 keratins consist of basic or neutral, high molecular weight proteins with MW from 52 kDa (KRT8) to 67 kDa (KRT18). Keratin 5, one 58-kD type II keratin, is coexpressed with a 50-kD keratin 14 in stratified squamous epithelia.

## Storage

**Storage:**  
Store at -20°C. Stable for one year after shipment.  
**Storage Buffer:**  
PBS with 0.02% sodium azide and 50% glycerol pH 7.3.  
**Aliquoting is unnecessary for -20°C storage**

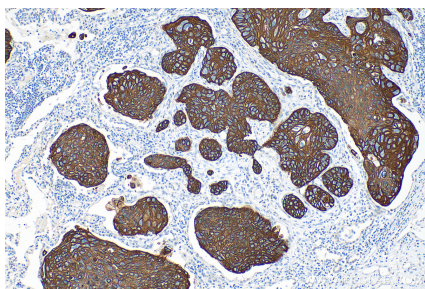
For technical support and original validation data for this product please contact:

T: 4006900926

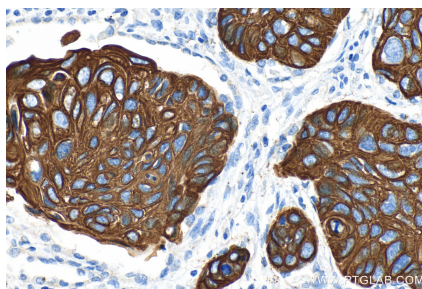
E: [Proteintech-CN@ptglab.com](mailto:Proteintech-CN@ptglab.com)W: [ptgcn.com](http://ptgcn.com)

This product is exclusively available under Proteintech Group brand and is not available to purchase from any other manufacturer.

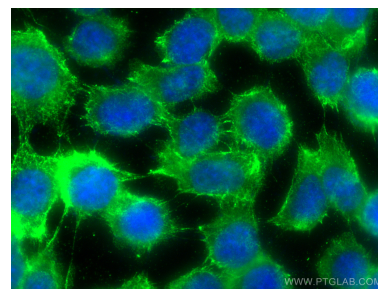
## Selected Validation Data



Immunohistochemical analysis of paraffin-embedded human lung squamous cell carcinoma tissue slide using 82548-7-RR (KRT5 antibody) at dilution of 1:1000 (under 10x lens). Heat mediated antigen retrieval with Tris-EDTA buffer (pH 9.0).



Immunohistochemical analysis of paraffin-embedded human lung squamous cell carcinoma tissue slide using 82548-7-RR (KRT5 antibody) at dilution of 1:1000 (under 40x lens). Heat mediated antigen retrieval with Tris-EDTA buffer (pH 9.0).



Immunofluorescent analysis of (-20°C Methanol) fixed A431 cells using KRT5 antibody (82548-7-RR, Clone: 4N17) at dilution of 1:400 and CoraLite®488-Conjugated AffiniPure Goat Anti-Rabbit IgG(H+L).