

Tim23 Recombinant antibody

Catalog Number: 82540-1-RR

Basic Information

Catalog Number:

82540-1-RR

Size:

500 µg/ml

Source:

Rabbit

Isotype:

IgG

Immunogen Catalog Number:

AG1620

GenBank Accession Number:

BC062707

GeneID (NCBI):

10431

UNIPROT ID:

O14925

Full Name:

translocase of inner mitochondrial membrane 23 homolog (yeast)

Calculated MW:

22 kDa

Observed MW:

22 kDa

Purification Method:

Protein A purification

CloneNo.:

1H16

Recommended Dilutions:

WB 1:2000-1:10000

IP 0.5-4.0 µg for 1.0-3.0 mg of total protein lysate

IHC 1:50-1:500

IF/ICC 1:400-1:1600

Applications

Tested Applications:

WB, IP, IHC, ELISA, IF/ICC

Species Specificity:

Human, mouse, rat

Note-IHC: suggested antigen retrieval with TE buffer pH 9.0; (*) Alternatively, antigen retrieval may be performed with citrate buffer pH 6.0

Positive Controls:

WB : HeLa cells, MCF-7 cells, Jurkat cells, K-562 cells, NIH/3T3 cells, mouse heart tissue, rat heart tissue

IP : HeLa cells,

IHC : mouse heart tissue,

IF/ICC : HepG2 cells,

Background Information

Tim23, a key component of the mitochondrial preprotein translocase, is anchored in the inner membrane by its C-terminal domain and exposes an intermediate domain in the intermembrane space that functions as a presequence receptor. Tim23 is the main component of the translocation channel of the TIM23 complex. (PMID: 10830167, PMID: 25083920)

Storage

Storage:

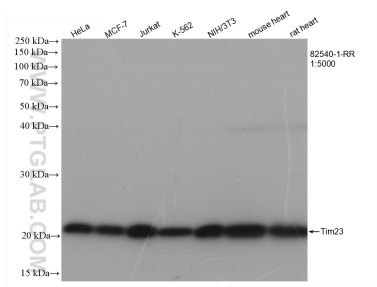
Store at -20°C. Stable for one year after shipment.

Storage Buffer:

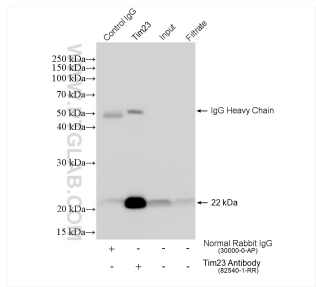
PBS with 0.02% sodium azide and 50% glycerol pH 7.3.

Aliquoting is unnecessary for -20°C storage

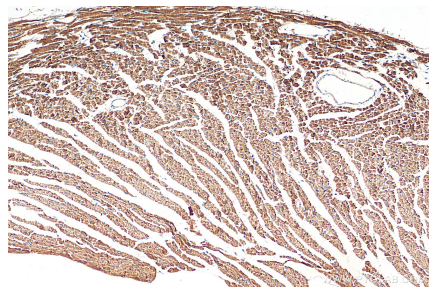
Selected Validation Data



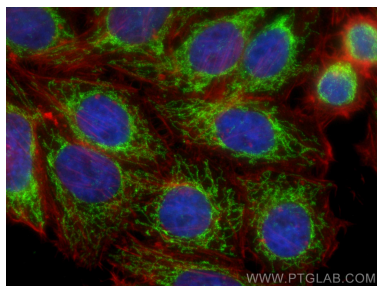
Various lysates were subjected to SDS PAGE followed by western blot with 82540-1-RR (Tim23 antibody) at dilution of 1:5000 incubated at room temperature for 1.5 hours.



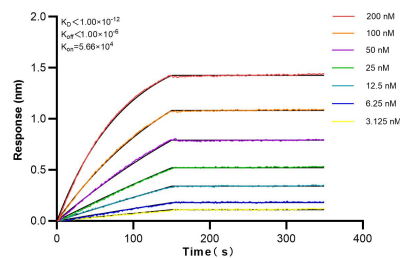
IP result of anti-Tim23 (IP:82540-1-RR, 4ug; Detection:82540-1-RR 1:1000) with HeLa cells lysate 1280 ug.



Immunohistochemical analysis of paraffin-embedded mouse heart tissue slide using 82540-1-RR (Tim23 antibody) at dilution of 1:200 (under 10x lens). Heat mediated antigen retrieval with Tris-EDTA buffer (pH 9.0).



Immunofluorescent analysis of (4% PFA) fixed HepG2 cells using Tim23 antibody (82540-1-RR, Clone: 1H16) at dilution of 1:500 and CoraLite®488-Conjugated AffiniPure Goat Anti-Rabbit IgG(H+L), CL594-Phalloidin (red).



Biolayer interferometry (BLI) kinetic assays of 82540-1-RR against Human Tim23 were performed. The affinity constant is below 1 pM.