

For Research Use Only

# Tim23 Recombinant antibody, PBS Only



Catalog Number: 82540-1-PBS

## Basic Information

<b>Catalog Number:</b> 82540-1-PBS	<b>GenBank Accession Number:</b> BC062707	<b>Purification Method:</b> Protein A purification
<b>Size:</b> 1mg/ml	<b>GeneID (NCBI):</b> 10431	<b>CloneNo.:</b> 1H16
<b>Source:</b> Rabbit	<b>UNIPROT ID:</b> O14925	
<b>Isotype:</b> IgG	<b>Full Name:</b> translocase of inner mitochondrial membrane 23 homolog (yeast)	
<b>Immunogen Catalog Number:</b> AG1620	<b>Calculated MW:</b> 22 kDa	
	<b>Observed MW:</b> 22 kDa	

## Applications

**Tested Applications:**  
WB, IP, IHC, IF/ICC, Indirect ELISA

**Species Specificity:**  
Human, mouse, rat

## Background Information

Tim23, a key component of the mitochondrial preprotein translocase, is anchored in the inner membrane by its C-terminal domain and exposes an intermediate domain in the intermembrane space that functions as a presequence receptor. Tim23 is the main component of the translocation channel of the TIM23 complex. (PMID: 10830167, PMID: 25083920)

## Storage

**Storage:**  
Store at -80°C.

**The product is shipped with ice packs. Upon receipt, store it immediately at -80°C**

**Storage Buffer:**  
PBS Only

For technical support and original validation data for this product please contact:

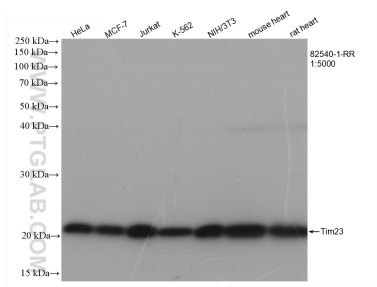
T: 4006900926

E: [Proteintech-CN@ptglab.com](mailto:Proteintech-CN@ptglab.com)

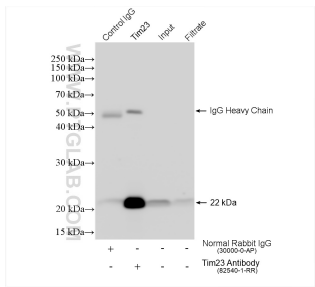
W: [ptgcn.com](http://ptgcn.com)

**This product is exclusively available under Proteintech Group brand and is not available to purchase from any other manufacturer.**

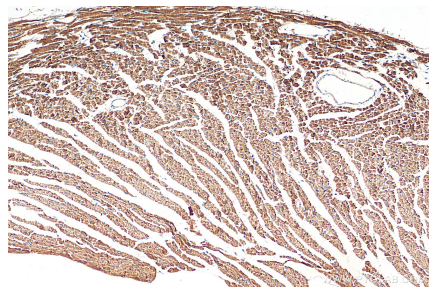
Selected Validation Data



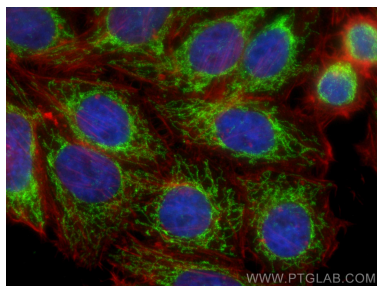
Various lysates were subjected to SDS PAGE followed by western blot with 82540-1-RR (Tim23 antibody) at dilution of 1:5000 incubated at room temperature for 1.5 hours. This data was developed using the same antibody clone with 82540-1-PBS in a different storage buffer formulation.



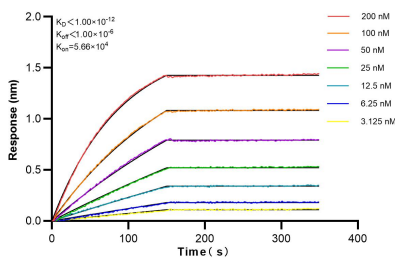
IP result of anti-Tim23 (IP:82540-1-RR, 4ug; Detection:82540-1-RR 1:1000) with HeLa cells lysate 1280 ug. This data was developed using the same antibody clone with 82540-1-PBS in a different storage buffer formulation.



Immunohistochemical analysis of paraffin-embedded mouse heart tissue slide using 82540-1-RR (Tim23 antibody) at dilution of 1:200 (under 10x lens). Heat mediated antigen retrieval with Tris-EDTA buffer (pH 9.0). This data was developed using the same antibody clone with 82540-1-PBS in a different storage buffer formulation.



Immunofluorescent analysis of (4% PFA) fixed HepG2 cells using Tim23 antibody (82540-1-RR, Clone: 1H16) at dilution of 1:500 and CoraLite®488-Conjugated AffiniPure Goat Anti-Rabbit IgG(H+L), CL594-Phalloidin (red). This data was developed using the same antibody clone with 82540-1-PBS in a different storage buffer formulation.



Biolayer interferometry (BLI) kinetic assays of 82540-1-RR against Human Tim23 were performed. The affinity constant is below 1 pM.