

For Research Use Only

# SHP2 Recombinant antibody, PBS Only

Catalog Number: 82503-1-PBS

Featured Product



## Basic Information

Catalog Number:

82503-1-PBS

Size:

1mg/ml

Source:

Rabbit

Isotype:

IgG

Immunogen Catalog Number:

AG13660

GenBank Accession Number:

BC008692

GeneID (NCBI):

5781

UNIPROT ID:

Q06124

Full Name:

protein tyrosine phosphatase, non-receptor type 11

Calculated MW:

597 aa, 68 kDa

Observed MW:

68 kDa

Purification Method:

Protein A purification

CloneNo.:

5L23

## Applications

Tested Applications:

WB, IHC, IP, Indirect ELISA

Species Specificity:

human, mouse, rat

## Background Information

PTPN11 (protein tyrosine phosphatase, non-receptor type 11), also named as PTP-1D, PTP2, PTP2C, PTP3, SHP2, CFC, CFC, BPTP3, SH-PTP2, SH-PTP3, and MGC14433, belongs to the protein-tyrosine phosphatase family and non-receptor class 2 subfamily. It modulates and regulates signaling through numerous pathways, many of which are active in the developing endocardial cushions and implicated the ERK pathway as a central mechanism (PMID:19017799). Its signaling may play equally important roles in retinal survival in both physiological and pathological conditions (PMID:21576358). Defects in PTPN11 are the cause of LEOPARD syndrome type 1 (LEOPARD1), Noonan syndrome type 1 (NS1), juvenile myelomonocytic leukemia (JMML), and metachondromatosis (MC). It has 3 isoforms produced by alternative splicing.

## Storage

Storage:

Store at -80°C.

The product is shipped with ice packs. Upon receipt, store it immediately at -80°C

Storage Buffer:

PBS Only

For technical support and original validation data for this product please contact:

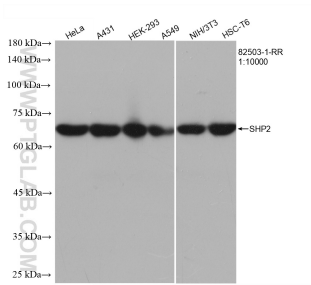
T: 4006900926

E: [Proteintech-CN@ptglab.com](mailto:Proteintech-CN@ptglab.com)

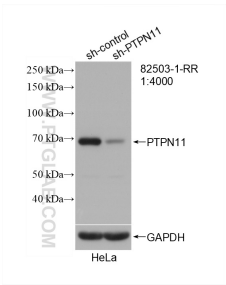
W: [ptgcn.com](http://ptgcn.com)

This product is exclusively available under Proteintech Group brand and is not available to purchase from any other manufacturer.

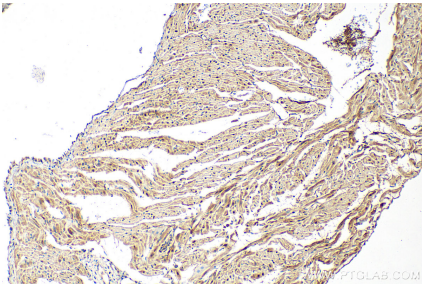
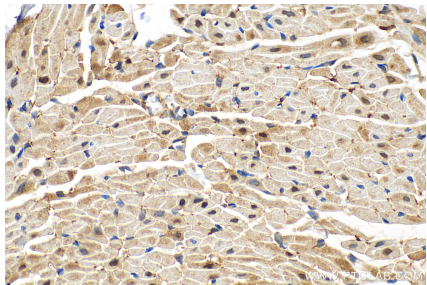
Selected Validation Data



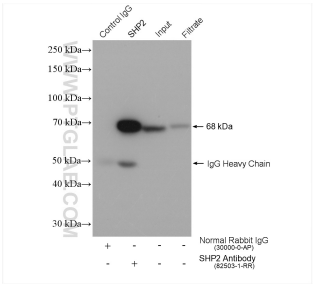
Various lysates were subjected to SDS PAGE followed by western blot with 82503-1-RR (PTPN11 antibody) at dilution of 1:10000 incubated at room temperature for 1.5 hours. This data was developed using the same antibody clone with 82503-1-PBS in a different storage buffer formulation.



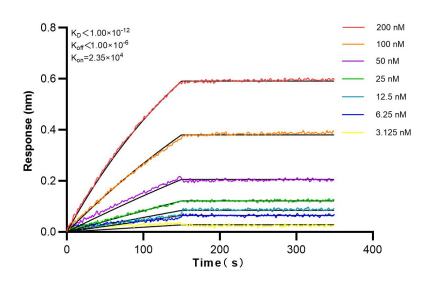
WB result of SHP2 antibody (82503-1-RR; 1:4000; incubated at room temperature for 1.5 hours) with sh-Control and sh-SHP2 transfected HeLa cells. This data was developed using the same antibody clone with 82503-1-PBS in a different storage buffer formulation.



Immunohistochemical analysis of paraffin-embedded rat heart tissue slide using 82503-1-RR (SHP2 antibody) at dilution of 1:4000 (under 10x lens). Heat mediated antigen retrieval with Sodium Citrate buffer (pH 6.0). This data was developed using the same antibody clone with 82503-1-PBS in a different storage buffer formulation.



IP result of anti-PTPN11/SHP2 (IP:82503-1-RR, 4ug; Detection:82503-1-RR 1:8000) with HEK-293 cells lysate 1280 ug. This data was developed using the same antibody clone with 82503-1-PBS in a different storage buffer formulation.



Bilayer interferometry (BLI) kinetic assays of 82503-1-RR against Human PTPN11/SHP2 were performed. The affinity constant is below 1 pM.