

For Research Use Only

LASP1 Recombinant antibody

Catalog Number: 82491-1-RR



Basic Information

Catalog Number: 82491-1-RR	GenBank Accession Number: BC012460	Purification Method: Protein A purification
Size: 250 µg/ml	GeneID (NCBI): 3927	CloneNo.: 4J2
Source: Rabbit	ENSEMBL Gene ID: ENSG00000002834	Recommended Dilutions: WB 1:2000-1:10000 IF 1:125-1:500
Isotype: IgG	UNIPROT ID: Q14847	
Immunogen Catalog Number: AG0800	Full Name: LIM and SH3 protein 1	
	Calculated MW: 30 kDa	
	Observed MW: 35 kDa	

Applications

Tested Applications: IF/ICC, WB, ELISA	Positive Controls:
Species Specificity: Human, mouse, rat	WB: A431 cells, SKOV-3 cells, PC-3 cells, HCT 116 cells, Jurkat cells, mouse brain tissue, rat brain tissue
	IF: HeLa cells,

Background Information

LASP1(LIM and SH3 protein 1), also known as MLN50, is a 261 amino acid protein that localizes to both the cytoplasm and the cytoskeleton(PMID: 7589475). LASP1 consists of an N-terminal LIM-domain with two zinc finger motifs, followed by two central actin-binding nebulin repeats, flanked by a linker region and a C-terminal SH3 domain (PMID: 17177073, 9848085). LASP-1 interacts with F-Actin and plays an important role in the regulation of Actin-associated cytoskeletal organization. Agonist-dependent changes in LASP1 phosphorylation may regulate Actin-related ion transport activities in epithelial cells (PMID: 15465019,12571245). Overexpression of LASP-1 is associated with breast cancer, and plays a role in tumor transformation and metastasis (PMID: 17956604).

Storage

Storage:
Store at -20°C. Stable for one year after shipment.
Storage Buffer:
PBS with 0.02% sodium azide and 50% glycerol pH 7.3.
Aliquoting is unnecessary for -20°C storage

For technical support and original validation data for this product please contact:

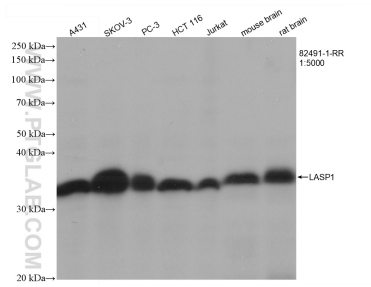
T: 4006900926

E: Proteintech-CN@ptglab.com

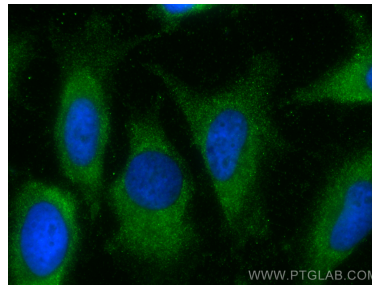
W: ptgcn.com

This product is exclusively available under Proteintech Group brand and is not available to purchase from any other manufacturer.

Selected Validation Data



Various lysates were subjected to SDS PAGE followed by western blot with 82491-1-RR (LASP1 antibody) at dilution of 1:5000 incubated at room temperature for 1.5 hours.



Immunofluorescent analysis of (-20°C Methanol) fixed HeLa cells using LASP1 antibody (82491-1-RR, Clone: 4J2) at dilution of 1:250 and CoraLite® 488-Conjugated AffiniPure Goat Anti-Rabbit IgG(H+L).