

For Research Use Only

LASP1 Recombinant antibody, PBS Only

Catalog Number: 82491-1-PBS



Basic Information

Catalog Number: 82491-1-PBS	GenBank Accession Number: BC012460	Purification Method: Protein A purification
Size: 1mg/ml	GeneID (NCBI): 3927	CloneNo.: 4J2
Source: Rabbit	ENSEMBL Gene ID: ENSG00000002834	
Isotype: IgG	UNIPROT ID: Q14847	
Immunogen Catalog Number: AG0800	Full Name: LIM and SH3 protein 1	
	Calculated MW: 30 kDa	
	Observed MW: 35 kDa	

Applications

Tested Applications:
WB, IHC, IF/ICC, Indirect ELISA

Species Specificity:
human, mouse, rat

Background Information

LASP1(LIM and SH3 protein 1), also known as MLN50, is a 261 amino acid protein that localizes to both the cytoplasm and the cytoskeleton(PMID: 7589475). LASP1 consists of an N-terminal LIM-domain with two zinc finger motifs, followed by two central actin-binding nebulin repeats, flanked by a linker region and a C-terminal SH3 domain (PMID: 17177073, 9848085). LASP-1 interacts with F-Actin and plays an important role in the regulation of Actin-associated cytoskeletal organization. Agonist-dependent changes in LASP1 phosphorylation may regulate Actin-related ion transport activities in epithelial cells (PMID: 15465019,12571245). Overexpression of LASP-1 is associated with breast cancer, and plays a role in tumor transformation and metastasis (PMID: 17956604).

Storage

Storage:
Store at -80°C.
The product is shipped with ice packs. Upon receipt, store it immediately at -80°C

Storage Buffer:
PBS Only

For technical support and original validation data for this product please contact:

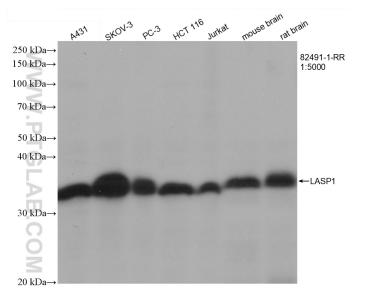
T: 4006900926

E: Proteintech-CN@ptglab.com

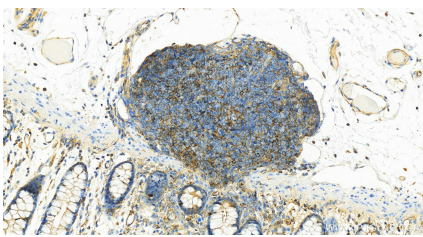
W: ptgcn.com

This product is exclusively available under Proteintech Group brand and is not available to purchase from any other manufacturer.

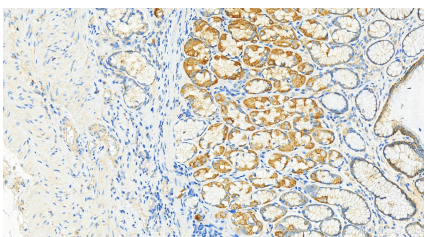
Selected Validation Data



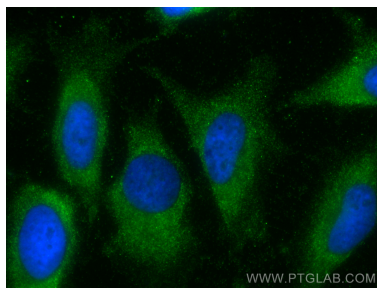
Various lysates were subjected to SDS PAGE followed by western blot with 82491-1-RR (LASP1 antibody) at dilution of 1:5000 incubated at room temperature for 1.5 hours. This data was developed using the same antibody clone with 82491-1-PBS in a different storage buffer formulation.



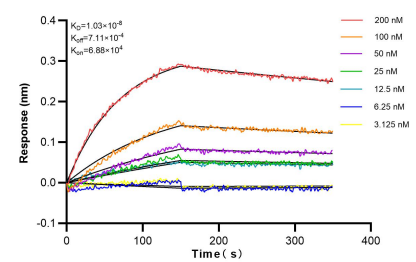
Immunohistochemical analysis of paraffin-embedded human normal colon slide using 82491-1-RR (LASP1 antibody) at dilution of 1:1000 (under 20x lens). Heat mediated antigen retrieval with Tris-EDTA buffer (pH 9.0). This data was developed using the same antibody clone with 82491-1-PBS in a different storage buffer formulation.



Immunohistochemical analysis of paraffin-embedded human stomach tissue slide using 82491-1-RR (LASP1 antibody) at dilution of 1:1000 (under 20x lens). Heat mediated antigen retrieval with Tris-EDTA buffer (pH 9.0). This data was developed using the same antibody clone with 82491-1-PBS in a different storage buffer formulation.



Immunofluorescent analysis of (-20°C Methanol) fixed HeLa cells using LASP1 antibody (82491-1-RR, Clone: 4J2) at dilution of 1:250 and CoraLite®488-Conjugated AffiniPure Goat Anti-Rabbit IgG(H+L). This data was developed using the same antibody clone with 82491-1-PBS in a different storage buffer formulation.



Biolayer interferometry (BLI) kinetic assays of 82491-1-RR against Human LASP1 were performed. The affinity constant is 10.3 nM.