

For Research Use Only

CUL1 Recombinant antibody, PBS Only



Catalog Number: 82474-1-PBS

Basic Information

Catalog Number: 82474-1-PBS	GenBank Accession Number: BC034318	Purification Method: Protein A purification
Size: 1mg/ml	GeneID (NCBI): 8454	CloneNo.: 5K17
Source: Rabbit	UNIPROT ID: Q13616	
Isotype: IgG	Full Name: cullin 1	
Immunogen Catalog Number: AG3585	Calculated MW: 90 kDa	
	Observed MW: 90 kDa	

Applications

Tested Applications:
Indirect ELISA, IP, WB

Species Specificity:
Human, rat, mouse

Background Information

The cullin family proteins are scaffold proteins for the Ring finger type E3 ligases. Humans express seven cullin proteins: CUL1-3, CUL4A, CUL4B, CUL5, and CUL7. Each cullin protein can form an E3 ligase similar to the prototype Ring-type E3 ligase Skp1-CUL1-F-box complex. The Cullin-RING-finger type E3 ligases are important regulators in early embryonic development, as highlighted by genetic studies demonstrating that knock-out of CUL1, CUL3, or CUL4A in mice results in early embryonic lethality.

Storage

Storage:
Store at -80°C.

The product is shipped with ice packs. Upon receipt, store it immediately at -80°C

Storage Buffer:
PBS Only

For technical support and original validation data for this product please contact:

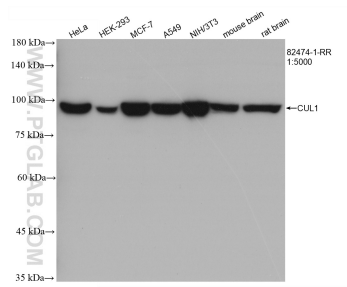
T: 4006900926

E: Proteintech-CN@ptglab.com

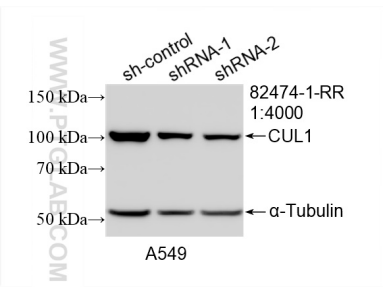
W: ptgcn.com

This product is exclusively available under Proteintech Group brand and is not available to purchase from any other manufacturer.

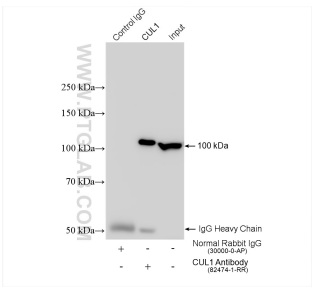
Selected Validation Data



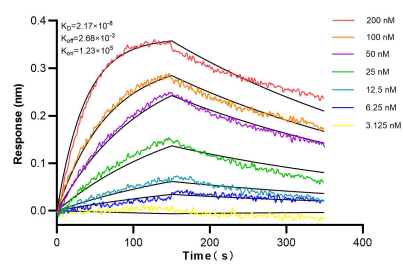
Various lysates were subjected to SDS PAGE followed by western blot with 82474-1-RR (CUL1 antibody) at dilution of 1:5000 incubated at room temperature for 1.5 hours. This data was developed using the same antibody clone with 82474-1-PBS in a different storage buffer formulation.



WB result of CUL1 antibody (82474-1-RR; 1:4000; incubated at room temperature for 1.5 hours) with sh-Control and sh-CUL1 transfected A549 cells. This data was developed using the same antibody clone with 82474-1-PBS in a different storage buffer formulation.



IP result of anti-CUL1 (IP:82474-1-RR, 4ug; Detection:82474-1-RR 1:1000) with HeLa cells lysate 1280 ug. This data was developed using the same antibody clone with 82474-1-PBS in a different storage buffer formulation.



Biolayer interferometry (BLI) kinetic assays of 82474-1-RR against Human CUL1 were performed. The affinity constant is 21.7 nM.