

# Bcl2 Recombinant antibody

Catalog Number: 82469-6-RR

## Basic Information

## Catalog Number:

82469-6-RR

## Size:

1000 µg/ml

## Source:

Rabbit

## Isotype:

IgG

## Immunogen Catalog Number:

AG24260

## GenBank Accession Number:

NM-009741

## GeneID (NCBI):

12043

## UNIPROT ID:

P10417

## Full Name:

B-cell leukemia/lymphoma 2

## Calculated MW:

26 kDa

## Observed MW:

26 kDa

## Purification Method:

Protein A purification

## CloneNo.:

240571H5

## Recommended Dilutions:

WB 1:2000-1:10000

## Applications

## Tested Applications:

WB, FC (Intra), ELISA

## Species Specificity:

mouse

## Positive Controls:

WB : mouse kidney tissue, mouse spleen tissue, mouse heart tissue

## Background Information

Bcl2 is a member of the B cell lymphoma 2 protein family. Members of this family regulate cell death in multiple cell types and can have either proapoptotic or antiapoptotic activities. The protein encoded by this gene inhibits mitochondrial-mediated apoptosis. This protein is an integral outer mitochondrial membrane protein that functions as part of signaling pathway that controls mitochondrial permeability in response to apoptotic stimuli. This protein may also play a role in neuron cell survival and autophagy. Abnormal expression and chromosomal translocations of this gene are associated with cancer progression in numerous tissues.

## Storage

## Storage:

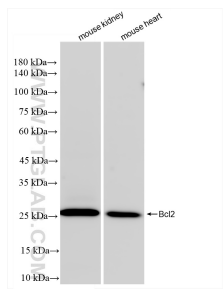
Store at -20°C. Stable for one year after shipment.

## Storage Buffer:

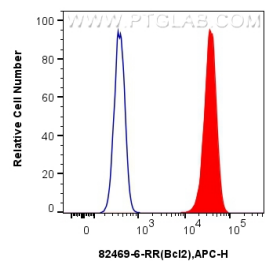
PBS with 0.02% sodium azide and 50% glycerol pH 7.3.

Aliquoting is unnecessary for -20°C storage

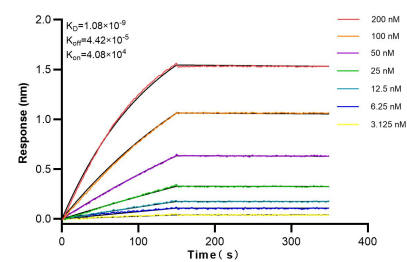
## Selected Validation Data



Various lysates were subjected to SDS PAGE followed by western blot with 82469-6-RR (Bcl2 antibody) at dilution of 1:5000 incubated at room temperature for 1.5 hours.



$1 \times 10^6$  NIH/3T3 cells were intracellularly stained with 0.25  $\mu$ g Bcl2 Recombinant antibody (82469-6-RR, Clone:240571H5) and APC-Conjugated AffiniPure Goat Anti-Rabbit IgG(H+L)(red), or 0.25  $\mu$ g Isotype Control (blue). Cells were fixed with 4% PFA and permeabilized with Flow Cytometry Perm Buffer (PF00011-C).



Biolayer interferometry (BLI) kinetic assays of 82469-6-RR against Mouse Bcl2 were performed. The affinity constant is 1.08 nM.