

For Research Use Only

# Cystatin C Recombinant monoclonal antibody, PBS Only (Detector)

Catalog Number: 82441-4-PBS



## Basic Information

Catalog Number:

82441-4-PBS

Source:

Rabbit

Isotype:

IgG

Immunogen Catalog Number:

HZ-1211

GenBank Accession Number:

GeneID (NCBI):

1471

UNIPROT ID:

P01034

Full Name:

cystatin C

Purification Method:

Protein A purification

CloneNo.:

252072F7

## Applications

Tested Applications:

Sandwich ELISA, Indirect ELISA

Species Specificity:

human

## Background Information

### Storage

Storage:

Store at -80°C.

**The product is shipped with ice packs. Upon receipt, store it immediately at -80°C**

Storage Buffer:

PBS only, pH7.3

For technical support and original validation data for this product please contact:

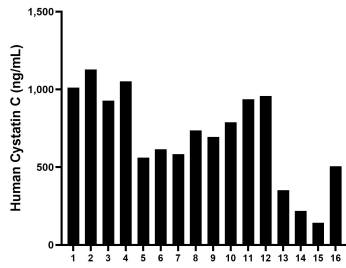
T: 4006900926

E: [Proteintech-CN@ptglab.com](mailto:Proteintech-CN@ptglab.com)

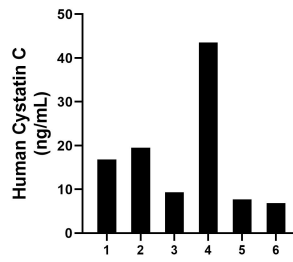
W: [ptgcn.com](http://ptgcn.com)

**This product is exclusively available under Proteintech Group brand and is not available to purchase from any other manufacturer.**

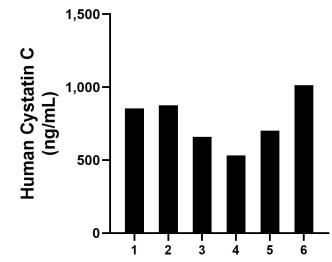
## Selected Validation Data



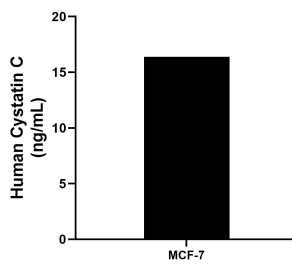
Saliva of sixteen individual healthy human donors was measured. The human Cystatin C concentration of detected samples was determined to be 701.01 ng/mL with a range of 142.93 - 1,128.79 ng/mL.



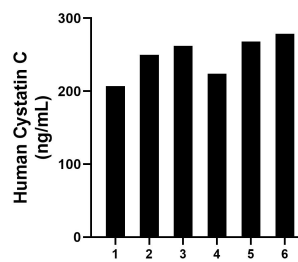
Urine of six individual healthy human donors was measured. The human Cystatin C concentration of detected samples was determined to be 17.29 ng/mL with a range of 6.84 - 43.57 ng/mL.



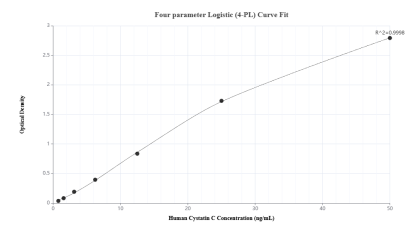
Human milk of six individual healthy human donors was measured. The human Cystatin C concentration of detected samples was determined to be 772.84 ng/mL with a range of 532.83 - 1,013.37 ng/mL.



MCF-7 human breast cancer cells ( $5 \times 10^6$  cells/mL) were cultured in DMEM and 10% fetal bovine serum, 4 mM L-glutamine, 4500 mg/L glucose, 100 U/mL penicillin, and 100  $\mu$ g/mL streptomycin sulfate. An aliquot of the cell culture supernate was removed, assayed for human Cystatin C, and measured 16.39 ng/mL.



Plasma of six individual healthy human donors was measured. The human Cystatin C concentration of detected samples was determined to be 248.17 ng/mL with a range of 206.96 - 278.44 ng/mL.



Sandwich ELISA standard curve of MP02984-2, Human Cystatin C Recombinant Matched Antibody Pair - PBS only. 82441-3-PBS was coated to a plate as the capture antibody and incubated with serial dilutions of standard HZ-1211. 82441-4-PBS was HRP conjugated as the detection antibody. Range: 0.781-50 ng/mL.