

For Research Use Only

Cytokeratin 20 Recombinant antibody



Catalog Number: 82428-1-RR

Basic Information

Catalog Number: 82428-1-RR	GenBank Accession Number: BC031559	Purification Method: Protein A purification
Size: 1000 µg/ml	GeneID (NCBI): 54474	CloneNo.: 2H10
Source: Rabbit	UNIPROT ID: P35900	Recommended Dilutions: WB 1:5000-1:50000 IHC 1:750-1:3000 IF 1:500-1:2000
Isotype: IgG	Full Name: keratin 20	
Immunogen Catalog Number: AG11308	Calculated MW: 424 aa, 48 kDa	
	Observed MW: 46 kDa	

Applications

Tested Applications:
FC, IF/ICC, IHC, WB, ELISA

Species Specificity:
Human, mouse, rat, pig

Note-IHC: suggested antigen retrieval with TE buffer pH 9.0; (*) Alternatively, antigen retrieval may be performed with citrate buffer pH 6.0

Positive Controls:

WB: HT-29 cells, COLO 320 cells, pig colon tissue, mouse colon tissue, rat colon tissue

IHC: human appendicitis tissue, human colon cancer tissue, human urothelial carcinoma tissue

IF: HT-29 cells,

Background Information

Keratins are a large family of proteins that form the intermediate filament cytoskeleton of epithelial cells, which are classified into two major sequence types. Type I keratins are a group of acidic intermediate filament proteins, including K9-K23, and the hair keratins Ha1-Ha8. Type II keratins are the basic or neutral counterparts to the acidic type I keratins, including K1-K8, and the hair keratins, Hb1-Hb6. Keratin 20 is a type I cytokeratin. It is a major cellular protein of mature enterocytes and goblet cells and is specifically found in the gastric and intestinal mucosa.

Storage

Storage:
Store at -20°C. Stable for one year after shipment.
Storage Buffer:
PBS with 0.02% sodium azide and 50% glycerol pH 7.3.
Aliquoting is unnecessary for -20°C storage

For technical support and original validation data for this product please contact:

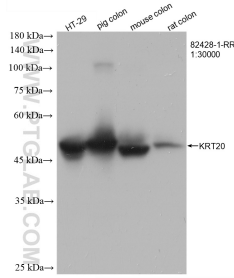
T: 4006900926

E: Proteintech-CN@ptglab.com

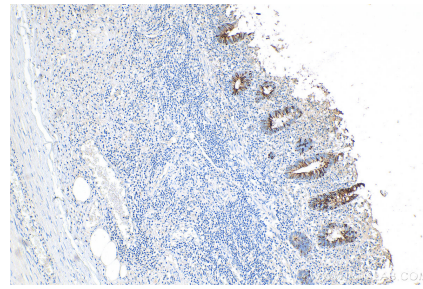
W: ptgcn.com

This product is exclusively available under Proteintech Group brand and is not available to purchase from any other manufacturer.

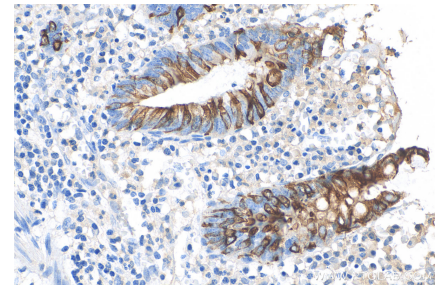
Selected Validation Data



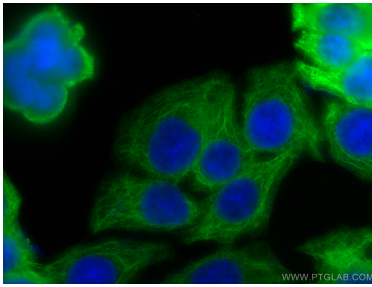
Various lysates were subjected to SDS PAGE followed by western blot with 82428-1-RR (Cytokeratin 20 antibody) at dilution of 1:22000 incubated at room temperature for 1.5 hours.



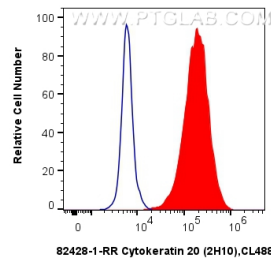
Immunohistochemical analysis of paraffin-embedded human appendicitis tissue slide using 82428-1-RR (Cytokeratin 20 antibody) at dilution of 1:1100 (under 10x lens). Heat mediated antigen retrieval with Tris-EDTA buffer (pH 9.0).



Immunohistochemical analysis of paraffin-embedded human appendicitis tissue slide using 82428-1-RR (Cytokeratin 20 antibody) at dilution of 1:1100 (under 40x lens). Heat mediated antigen retrieval with Tris-EDTA buffer (pH 9.0).



Immunofluorescent analysis of (-20°C Ethanol) fixed HT-29 cells using Cytokeratin 20 antibody (82428-1-RR, Clone: 2H10) at dilution of 1:1000 and CoraLite@488-Conjugated AffiniPure Goat Anti-Rabbit IgG(H+L).



1×10^6 HT-29 cells were intracellularly stained with 0.4 ug Anti-Human Cytokeratin 20 (82428-1-RR, Clone: 2H10) and CoraLite@488-Conjugated AffiniPure Goat Anti-Rabbit IgG(H+L) at dilution 1:1000 (red), or 0.4 ug Rabbit IgG control Rabbit PolyAb (30000-0-AP, Clone:) (blue). Cells were fixed with 4% PFA and permeabilized with Flow Cytometry Perm Buffer (PF00011-C).