

For Research Use Only

Cytokeratin 20 Recombinant antibody, PBS Only

Catalog Number: 82428-1-PBS



Basic Information

Catalog Number: 82428-1-PBS	GenBank Accession Number: BC031559	Purification Method: Protein A purification
Size: 1mg/ml	GeneID (NCBI): 54474	CloneNo.: 2H10
Source: Rabbit	UNIPROT ID: P35900	
Isotype: IgG	Full Name: keratin 20	
Immunogen Catalog Number: AG11308	Calculated MW: 424 aa, 48 kDa	
	Observed MW: 46 kDa	

Applications

Tested Applications:
WB, IHC, IF/ICC, FC (Intra), Indirect ELISA

Species Specificity:
human, mouse, rat, pig

Background Information

Keratins are a large family of proteins that form the intermediate filament cytoskeleton of epithelial cells, which are classified into two major sequence types. Type I keratins are a group of acidic intermediate filament proteins, including K9-K23, and the hair keratins Ha1-Ha8. Type II keratins are the basic or neutral counterparts to the acidic type I keratins, including K1-K8, and the hair keratins, Hb1-Hb6. Keratin 20 is a type I cytokeratin. It is a major cellular protein of mature enterocytes and goblet cells and is specifically found in the gastric and intestinal mucosa.

Storage

Storage:
Store at -80°C.
The product is shipped with ice packs. Upon receipt, store it immediately at -80°C

Storage Buffer:
PBS Only

For technical support and original validation data for this product please contact:

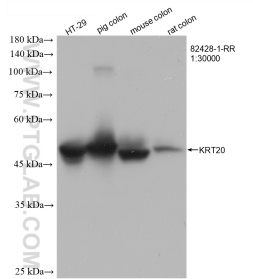
T: 4006900926

E: Proteintech-CN@ptglab.com

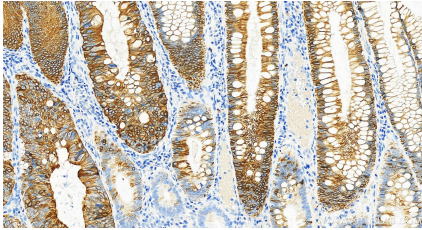
W: ptgcn.com

This product is exclusively available under Proteintech Group brand and is not available to purchase from any other manufacturer.

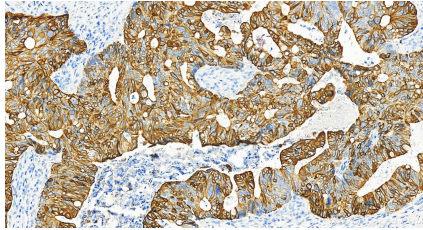
Selected Validation Data



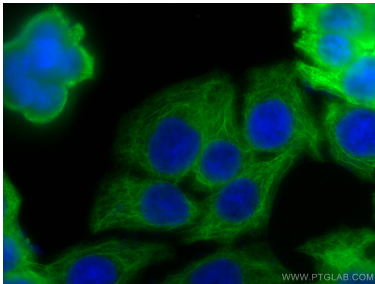
Various lysates were subjected to SDS PAGE followed by western blot with 82428-1-RR (Cytokeratin 20 antibody) at dilution of 1:22000 incubated at room temperature for 1.5 hours. This data was developed using the same antibody clone with 82428-1-PBS in a different storage buffer formulation.



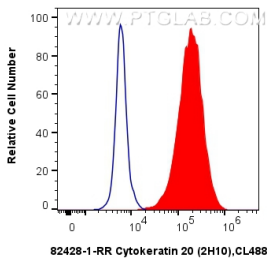
Immunohistochemical analysis of paraffin-embedded human colon cancer slide using 82428-1-RR (Cytokeratin 20 antibody) at dilution of 1:6000 (under 20x lens). Heat mediated antigen retrieval with Tris-EDTA buffer (pH 9.0). This data was developed using the same antibody clone with 82428-1-PBS in a different storage buffer formulation.



Immunohistochemical analysis of paraffin-embedded human colon cancer slide using 82428-1-RR (Cytokeratin 20 antibody) at dilution of 1:6000 (under 20x lens). Heat mediated antigen retrieval with Tris-EDTA buffer (pH 9.0). This data was developed using the same antibody clone with 82428-1-PBS in a different storage buffer formulation.



Immunofluorescent analysis of (-20°C Ethanol) fixed HT-29 cells using Cytokeratin 20 antibody (82428-1-RR, Clone: 2H10) at dilution of 1:1000 and CoraLite®488-Conjugated AffiniPure Goat Anti-Rabbit IgG(H+L). This data was developed using the same antibody clone with 82428-1-PBS in a different storage buffer formulation.



1X10⁶ HT-29 cells were intracellularly stained with 0.4 ug Anti-Human Cytokeratin 20 (82428-1-RR, Clone:2H10) and CoraLite®488-Conjugated AffiniPure Goat Anti-Rabbit IgG(H+L) at dilution 1:1000 (red), or 0.4 ug Rabbit IgG control Rabbit PolyAb (30000-O-AP, Clone:) (blue). Cells were fixed with 4% PFA and permeabilized with Flow Cytometry Perm Buffer (PF00011-C). This data was developed using the same antibody clone with 82428-1-PBS in a different storage buffer