

# ATF6 Recombinant antibody, PBS Only

Catalog Number: **82278-1-PBS**

## Basic Information

Catalog Number: <b>82278-1-PBS</b>	GenBank Accession Number: <b>BC014969</b>	Purification Method: <b>Protein A purification</b>
Size: <b>1mg/ml</b>	GeneID (NCBI): <b>22926</b>	CloneNo.: <b>208</b>
Source: <b>Rabbit</b>	UNIPROT ID: <b>P18850</b>	
Isotype: <b>IgG</b>	Full Name: <b>activating transcription factor 6</b>	
Immunogen Catalog Number: <b>AG21456</b>	Calculated MW: <b>75 kDa</b>	
	Observed MW: <b>90-100 kDa</b>	

## Applications

Tested Applications:  
WB, IP, Indirect ELISA

Species Specificity:  
human

## Background Information

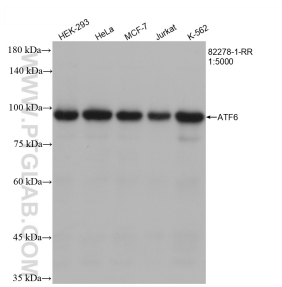
Activating transcription factor 6 (ATF6) is a transcription factor that acts during endoplasmic reticulum stress by activating unfolded protein response target genes. Binds DNA on the 5'-CCAC[GA]-3' half of the ER stress response element (ERSE) (5'-CCAAT-N(9)-CCAC[GA]-3') and of ERSE II (5'-ATTGG-N-CCACG-3'). Binding to ERSE requires binding of NF-Y to ERSE. Could also be involved in activation of transcription by the serum response factor. During unfolded protein response an approximative 50 kDa fragment containing the cytoplasmic transcription factor domain is released by proteolysis. The cleavage seems to be performed sequentially by site-1 and site-2 proteases. The fully glycosylated form of ATF6, a 670 amino acid protein, exhibits an electrophoretic mobility of ~90 kDa in denaturing SDS-gels, in part because of the glycosylated modifications. ATF6 has 3 consensus sites for N-linked glycosylation and exists constitutively as a glycosylated protein. Differentially glycosylated ATF6 forms may result from mutations or experimental treatment (PMID:15804611) (PMID:14699159).

## Storage

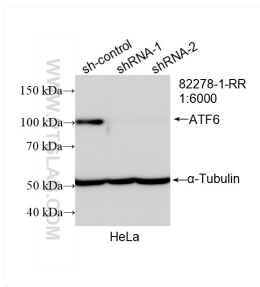
Storage:  
Store at -80°C.  
**The product is shipped with ice packs. Upon receipt, store it immediately at -80°C**

Storage Buffer:  
PBS Only

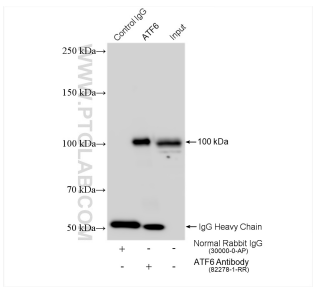
Selected Validation Data



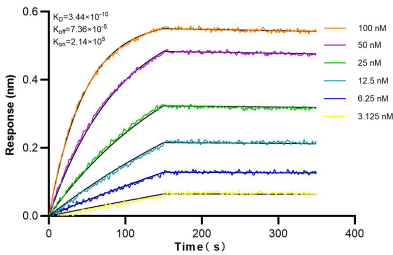
Various lysates were subjected to SDS PAGE followed by western blot with 82278-1-RR (ATF6 antibody) at dilution of 1:5000 incubated at room temperature for 1.5 hours. This data was developed using the same antibody clone with 82278-1-PBS in a different storage buffer formulation.



WB result of ATF6 antibody (82278-1-RR; 1:6000; incubated at room temperature for 1.5 hours) with sh-Control and sh-ATF6 transfected HeLa cells. This data was developed using the same antibody clone with 82278-1-PBS in a different storage buffer formulation.



IP result of anti-ATF6 (IP:82278-1-RR, 4ug; Detection:82278-1-RR 1:2000) with HeLa cells lysate 1280 ug. This data was developed using the same antibody clone with 82278-1-PBS in a different storage buffer formulation.



Biolayer interferometry (BLI) kinetic assays of 82278-1-RR against Human ATF6 were performed. The affinity constant is 0.344 nM.