

For Research Use Only

FIS1 Recombinant antibody

Catalog Number: 82248-1-RR



Basic Information

Catalog Number:

82248-1-RR

Size:

1000 ug/ml

Source:

Rabbit

Isotype:

IgG

Immunogen Catalog Number:

AG1409

GenBank Accession Number:

BC009428

GeneID (NCBI):

51024

UNIPROT ID:

Q9Y3D6

Full Name:

fission 1 (mitochondrial outer membrane) homolog (S. cerevisiae)

Calculated MW:

17 kDa

Observed MW:

15 kDa

Purification Method:

Protein A purification

CloneNo.:

6N15

Recommended Dilutions:

WB 1:5000-1:50000

IP 0.5-4.0 ug for 1.0-3.0 mg of total protein lysate

IHC 1:50-1:500

IF/ICC 1:500-1:2000

Applications

Tested Applications:

WB, IHC, IF/ICC, FC (Intra), IP, ELISA

Species Specificity:

human, mouse, rat

Note-IHC: suggested antigen retrieval with TE buffer pH 9.0; (*) Alternatively, antigen retrieval may be performed with citrate buffer pH 6.0

Positive Controls:

WB : LNCaP cells, HEK-293 cells, HeLa cells, HepG2 cells, Jurkat cells, NIH/3T3 cells, HSC-T6 cells

IP : HeLa cells,

IHC : human prostate cancer tissue, rat brain tissue

IF/ICC : HepG2 cells,

Background Information

Fis1 (fission 1) is an integral mitochondrial outer membrane protein that participates in mitochondrial fission by interacting with dynamin-related protein 1 (Drp1). Excessive mitochondrial fission is associated with the pathology of a number of neurodegenerative or neurodevelopmental diseases. Increased expression of Fis1 has been found in Huntington's disease (HD)-affected brain, Alzheimer's disease (AD) patients, and autism spectrum disorder. (PMID: 21257639, 21459773, 23333625)

Storage

Storage:

Store at -20°C. Stable for one year after shipment.

Storage Buffer:

PBS with 0.02% sodium azide and 50% glycerol pH 7.3.

Aliquoting is unnecessary for -20°C storage

For technical support and original validation data for this product please contact:

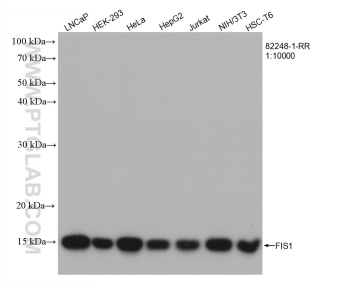
T: 4006900926

E: Proteintech-CN@ptglab.com

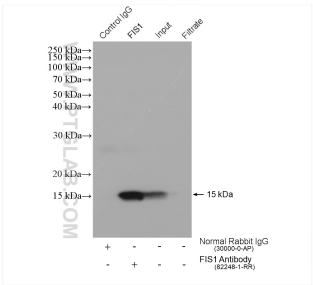
W: ptgcn.com

This product is exclusively available under Proteintech Group brand and is not available to purchase from any other manufacturer.

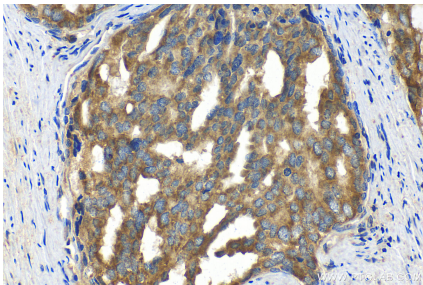
Selected Validation Data



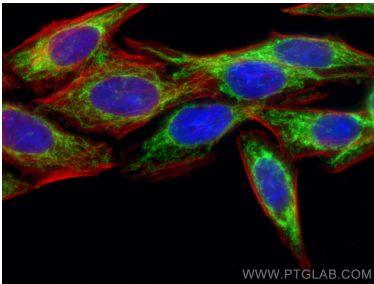
Various lysates were subjected to SDS PAGE followed by western blot with 82248-1-RR (FIS1 antibody) at dilution of 1:10000 incubated at room temperature for 1.5 hours.



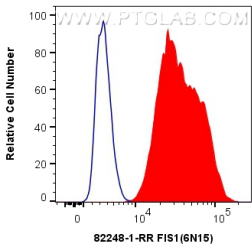
IP result of anti-FIS1 (IP:82248-1-RR, 4ug; Detection:82248-1-RR 1:5000) with HeLa cells lysate 1720 ug.



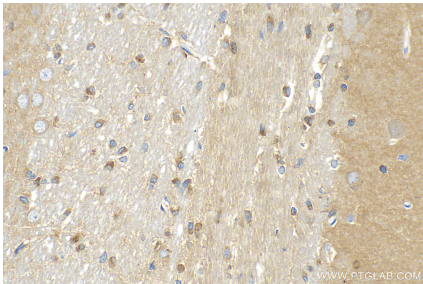
Immunohistochemical analysis of paraffin-embedded human prostate cancer tissue slide using 82248-1-RR (FIS1 antibody) at dilution of 1:200 (under 40x lens). Heat mediated antigen retrieval with Tris-EDTA buffer (pH 9.0).



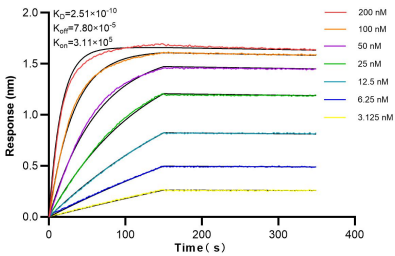
Immunofluorescent analysis of (4% PFA) fixed HepG2 cells using FIS1 antibody (82248-1-RR, Clone: 6N15) at dilution of 1:1000 and CoraLite®488-Conjugated AffiniPure Goat Anti-Rabbit IgG(H+L), CL594-Phalloidin (red).



1X10⁶ HepG2 cells were intracellularly stained with 0.4 ug Anti-Human FIS1 (82248-1-RR, Clone:6N15) and CoraLite®488-Conjugated AffiniPure Goat Anti-Rabbit IgG(H+L) at dilution 1:1000 (red), or 0.4 ug Isotype Control. Cells were fixed with 4% PFA and permeabilized with Flow Cytometry Perm Buffer (PF00011-C).



Immunohistochemical analysis of paraffin-embedded rat brain tissue slide using 82248-1-RR (FIS1 antibody) at dilution of 1:200 (under 40x lens). Heat mediated antigen retrieval with Tris-EDTA buffer (pH 9.0).



Biolayer interferometry (BLI) kinetic assays of 82248-1-RR against Human FIS1 were performed. The affinity constant is 0.251 nM.