

FIS1 Recombinant antibody, PBS Only

Catalog Number: 82248-1-PBS

Basic Information

Catalog Number: 82248-1-PBS	GenBank Accession Number: BC009428	Purification Method: Protein A purification
Size: 1mg/ml	GeneID (NCBI): 51024	CloneNo.: 6N15
Source: Rabbit	UNIPROT ID: Q9Y3D6	
Isotype: IgG	Full Name: fission 1 (mitochondrial outer membrane) homolog (S. cerevisiae)	
Immunogen Catalog Number: AG1409	Calculated MW: 17 kDa	
	Observed MW: 15 kDa	

Applications

Tested Applications:
WB, IHC, IF/ICC, IP, Indirect ELISA

Species Specificity:
human, mouse, rat

Background Information

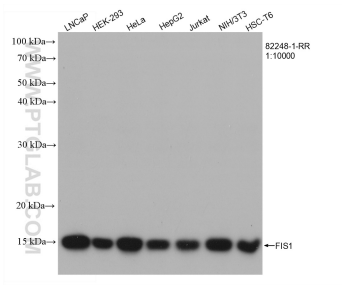
Fis1 (fission 1) is an integral mitochondrial outer membrane protein that participates in mitochondrial fission by interacting with dynamin-related protein 1 (Drp1). Excessive mitochondrial fission is associated with the pathology of a number of neurodegenerative or neurodevelopmental diseases. Increased expression of Fis1 has been found in Huntington's disease (HD)-affected brain, Alzheimer's disease (AD) patients, and autism spectrum disorder. (PMID: 21257639, 21459773, 23333625)

Storage

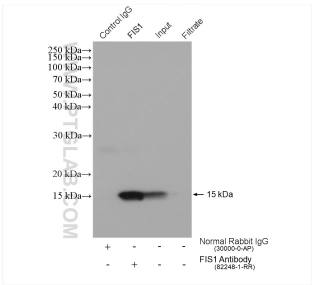
Storage:
Store at -80°C.
The product is shipped with ice packs. Upon receipt, store it immediately at -80°C

Storage Buffer:
PBS Only

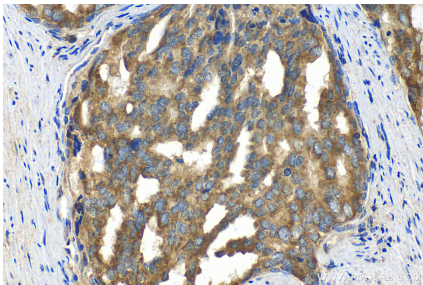
Selected Validation Data



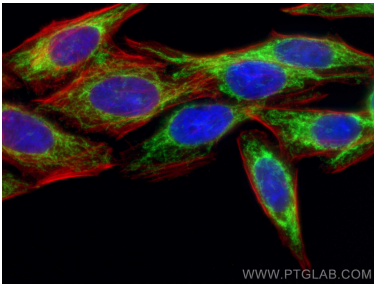
Various lysates were subjected to SDS PAGE followed by western blot with 82248-1-RR (FIS1 antibody) at dilution of 1:10000 incubated at room temperature for 1.5 hours. This data was developed using the same antibody clone with 82248-1-PBS in a different storage buffer formulation.



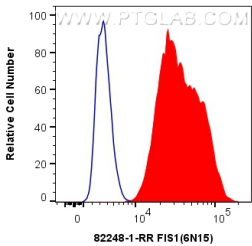
IP result of anti-FIS1 (IP:82248-1-RR, 4ug; Detection:82248-1-RR 1:5000) with HeLa cells lysate 1720 ug. This data was developed using the same antibody clone with 82248-1-PBS in a different storage buffer formulation.



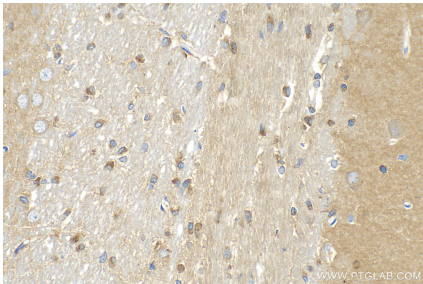
Immunohistochemical analysis of paraffin-embedded human prostate cancer tissue slide using 82248-1-RR (FIS1 antibody) at dilution of 1:200 (under 40x lens). Heat mediated antigen retrieval with Tris-EDTA buffer (pH 9.0). This data was developed using the same antibody clone with 82248-1-PBS in a different storage buffer formulation.



Immunofluorescent analysis of (4% PFA) fixed HepG2 cells using FIS1 antibody (82248-1-RR, Clone: 6N15) at dilution of 1:1000 and CoraLite®488-Conjugated AffiniPure Goat Anti-Rabbit IgG(H+L), CL594-Phalloidin (red). This data was developed using the same antibody clone with 82248-1-PBS in a different storage buffer formulation.



1X10⁶ HepG2 cells were intracellularly stained with 0.4 ug Anti-Human FIS1 (82248-1-RR, Clone:6N15) and CoraLite®488-Conjugated AffiniPure Goat Anti-Rabbit IgG(H+L) at dilution 1:1000 (red), or 0.4 ug Isotype Control. Cells were fixed with 4% PFA and permeabilized with Flow Cytometry Perm Buffer (PF00011-C). This data was developed using the same antibody clone with 82248-1-PBS in a different storage buffer formulation.



Immunohistochemical analysis of paraffin-embedded rat brain tissue slide using 82248-1-RR (FIS1 antibody) at dilution of 1:200 (under 40x lens). Heat mediated antigen retrieval with Tris-EDTA buffer (pH 9.0). This data was developed using the same antibody clone with 82248-1-PBS in a different storage buffer formulation.